

Demo
Test



Documentation



API



SNMP
Manual



Firmware
Drivers



Support
Portal



Subscribe
Newsletter



Solutions



Partners



VUTLAN



Vutlan s.r.o. (LTD)
43 ul.Svornosti,
82106, Bratislava,
Slovak Republic, EU
sales@vutlan.com
www.vutlan.com

VUTLAN

Remote Monitoring IoT Solutions



About Vutlan Mission and Vision.

Vutlan s.r.o. is a fast-growing EU high-tech company manufacturing smart IoT devices and sensors for monitoring and control of critical IT infrastructure environments.

Vutlan is a leader in remote monitoring solutions in Europe. We are a privately held company , manufacturing all products in EU.

We deliver products including environmental datacenter monitoring, managed and metered PDUs, LoRaWAN wireless solutions like Lorawan sensors, gateways and web servers, and other electronic equipment designed for data centers, server rooms, wide area environmental monitoring for home and offices.

We offer OEM products for rack producers and solution providers with full set of datacenter monitoring products.

Welcome, and we hope you enjoy our products.

Mission

We strive to provide IT companies, data centers, and offices with convenient, reliable, flexible, feature-rich, powerful, and affordable products. We are committed to providing outstanding customer support to all customers.

77

Partners

- Distributors
- Integrators
- Solution providers

48

Countries

- Europe
- Asia Pacific
- Africa
- Middle East
- America

2025

LoRaWAN
Wireless Gateway & Sensors
Metered PDUs

2024

OSDPv2 readers,
Dust sensor

2023

2 core processors

2020

Modbus monitoring

2018

LTE modems

2017

1Ghz processors
Corporate monitoring units

2016

OEM partners

2015

German market

2014

GSM modem
The company renamed Vutlan

2012

First profits

2009

CAN drivers

2005

Company started

LR800 LoRaWAN Gateway

- 8 channel LoRaWAN
- Long Range Wide Area Network
- Low power
- Embedded Server



COMING
SOON!

The **LR800** is a compact and powerful LoRaWAN gateway server for wide-area environmental monitoring and control. It collects, processes, and reports data from multiple LoRa sensors with high reliability.

Key Features:

- **Wide-Area Monitoring:** Supports multiple wireless sensors for monitoring temperature, humidity, voltage, access, water leaks, smoke, vibration, movement and other.
- **I/O Controller:** Built-in server, 8 LoRa channels, CAN input, 2 alarm relays, 2 dry contacts inputs and LTE modem extension slot.
- **Scalability:** Supports up to 800 elements—sensors, logic, and notifications.
- **Web Interface:** Easy configuration and monitoring via browser.
- **Extensions:** Optional 4G and CAN bus connectivity.
- **Remote alerts:** Telegram and email alerts; SMS, and voice call, and others.
- **Integration:** Works seamlessly with Vutlan monitoring systems, SNMP monitoring tools, and other applications over API.

VUTLAN
SOLUTIONS

www.vutlan.com

LR490 Temperature & Humidity sensor

- Long-range Wireless
- 10 years battery
- Accuracy $\pm 0.5^{\circ}\text{C}$, RH $\pm 3\%$
- Theft Sensor
- LoRaWAN



The **LR490 dual sensor** is a high-quality wireless temperature and humidity sensor & . By connecting to the Lorawan gateway, you can measure temperature and humidity parameters in the area.

The **Dew point** is easily calculated using the temperature and humidity parameters of LR490 inside the Vutlan web interface.

Class A, ver. 1.0.3. RH accuracy is $\pm 3\%$, temperature accuracy is $\pm 0.5^{\circ}\text{C}$.
Built-In theft attempt sensor.

COMING
SOON!

VUTLAN
SOLUTIONS

www.vutlan.com

LR530 Access sensor

- Long-range Wireless
- 10 years battery
- Accuracy $\pm 0.2^{\circ}\text{C}$
- Theft Sensor
- LoRaWAN



The **LR530** is a **wireless access sensor** combined with a **high-precision temperature sensor**. Connected to a LoRaWAN gateway, it allows you to monitor and control doors and windows, while simultaneously measuring room temperature.

If the temperature exceeds preset thresholds, the device automatically sends alerts to ensure timely response.

The sensor offers a temperature accuracy of $\pm 0.2^{\circ}\text{C}$ and includes a built-in tamper detection feature to indicate any theft or manipulation attempts.



LR590 Leak sensor

- Long-range Wireless
- 10 years battery
- Accuracy $\pm 3\% \text{RH}$, $\pm 0.5^{\circ}\text{C}$
- Temp. accuracy
- Theft Sensor



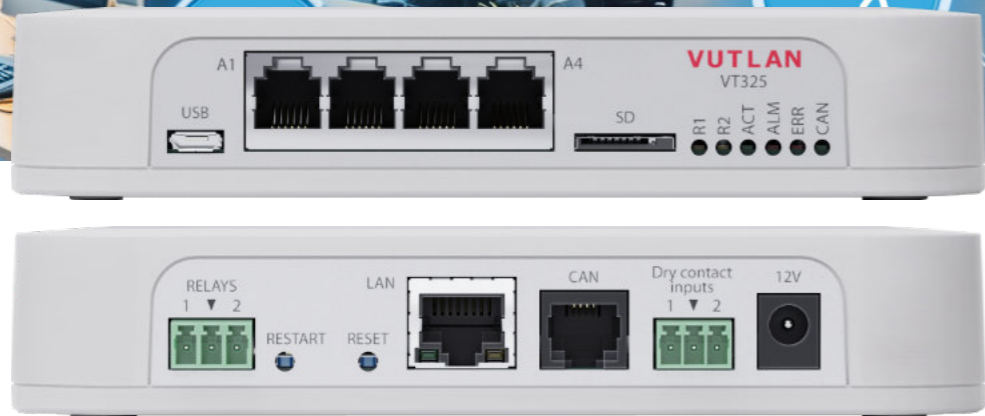
The **LR590** is a high-quality **wireless spot leak detector** combined with **temperature and humidity sensor**. When connected to a LoRaWAN gateway, it provides real-time monitoring of water leaks, temperature, and humidity throughout the area.

The dew point can be easily calculated within the Vutlan web interface using the measured temperature and humidity values.



VT225t Monitoring Unit

- Monitor 100 sensors, 700 elements
- Monitor small office, IT room



Low-cost remote environmental monitoring unit for small IT rooms. Monitor temperature, humidity, voltage, leakage, smoke, airflow, and other parameters. Can signal an alarm, activate a siren, send an e-mail notification, or send an SNMP Trap. Can monitor up to 100 physical sensors. Can use up to 700 different elements – notifications, triggers, timers, logic schemes, sensors, and dry contacts. Has a built-in Web interface. There are built-in servers and agents like HTTP, HTTPS, SNMP, SMTP, Radius, Syslog, FTP, DHCP, and OpenVPN client.

Specifications

CPU Speed / RAM / OS	2 cores, 600mHz / 128Mb / Linux v.6.2
Ethernet	10/100Mbps
USB port	For USB camera, USB flash, USB hub
Analog ports	x4 ports for sensors (extendable)
CAN port	x1 port (max. 10 sensors & extensions)
Dry Contact inputs	x2 digital inputs
Relays	x2 outputs, 12V, 0.25A each
Micro SD card slot	Up to 64 Gb
Installation	Desktop (Wall, DIN, & 19" brackets as extensions)
Warranty	3 years
Support	On-line portal



www.vutlan.com

Supports

- Centralized Monitoring & Control**
 - Responsive Web Interface
 - SNMP v1, v2c, v3
- Scalability**
 - Extension units,
 - Modbus TCP/IP, 4–20mA, 0–10V, Analog, CAN
- Improved security**
 - OpenVPN, SSL, HTTPS
 - Three-tier data access permissions with login
- Protocol support**
 - DHCP, HTTP, HTTPS, DynDNS, SMTP, RADIUS,
 - Syslog, NTP server, HTTP request
- API**
 - XML, JSON
- System Usability**
 - Multi-language mobile interface
 - First-time wizard
 - Sensor graphing for single & multiple sensors
- Virtual sensors / devices / elements**
 - PING, Timers, Triggers, Logic schemes,
 - IP cameras, Groups, Math, SNMP GET
- Notifications and alerts**
 - E-mail, SNMP Traps, Web-to-SMS, SMS link
- Logging**
 - SD card, USB flash, E-mail, FTP

VT335t Monitoring Unit

- Monitor 100 sensors, 700 elements
- Monitor server rack, IT room



Specifications

CPU Speed / RAM / OS	2 cores, 720mHz / 128Mb / Linux v.6.2
Ethernet	10/100Mbps
Redundant power	x2 12V DC inputs
USB port	For USB camera, USB flash, USB hub
Analog ports	x4 ports for sensors (extendable)
CAN port	x1 port (max. 32 sensors & extensions)
Dry Contact inputs	x4 digital inputs
Relays (12VDC)	x2 outputs, 0.25A each
Micro SD card slot	Up to 128 Gb SDHC
LTE slot modem	Ethernet, SMS (modem ordered separately)
Mounting	Desktop (Wall, DIN, & 19" bracket extensions)
Extensions	VT485m Modbus RTU or VT485r OSDPV2 reader extension
Warranty	3 years
Support	On-line portal



www.vutlan.com

Supports

- Centralized Monitoring & Control**
 - Responsive Web Interface
 - SNMP v1, v2c, v3
- Scalability**
 - Extension units, LTE modem, OSDPV2, Modbus RTU
 - Modbus TCP/IP, 4–20mA, 0–10V, Analog, CAN
- Improved security**
 - OpenVPN, SSL, HTTPS
 - Three-tier data access permissions with login
- Protocol support**
 - DHCP, HTTP, HTTPS, DynDNS, SMTP, RADIUS,
 - Syslog, NTP server, HTTP request
- API**
 - XML, JSON
- System Usability**
 - Multi-language mobile interface
 - First-time wizard
 - Sensor graphing for single and multiple sensors
- Virtual sensors / devices / elements**
 - PING, Timers, Triggers, Logic schemes, SNMP GET
 - IP cameras, Groups, Math
- Notifications and alerts**
 - E-mail, SMS, Phone dial, SNMP Traps, Web-to-SMS,
 - SMS link
- Logging**
 - SD card, USB flash, E-mail, FTP

VT825DCDC Remote Monitoring Unit

- Monitor 130 sensors, 1000 elements
- Redundant Power & Network

VT855tt Data Center Monitoring Unit

- Monitor 150 sensors, 1000 elements
- Redundant Power & Network



Specifications

CPU Speed / RAM / OS	2 cores, 720mHz / 128Mb / Linux v.6.2
Ethernet	10/100Mbps
Redundant power	x1 100-240V AC 50/60Hz inputs, x1 12V DC Other order options exist (e.g. 24-48V DC)
USB port	For USB camera, USB flash, USB hub
Analog ports	x8 ports for sensors (extendable)
CAN port	x1 port (max. 32 sensors & extensions)
Dry Contact inputs	x16 dry contact inputs
Relays (12V DC)	x2 outputs, 0.25A each
Relays (NC/NO/COM)	x2 bistable power relays terminals
Micro SD card slot	Up to 256 Gb SDHC
LTE slot modem	Ethernet, SMS, (VT740 ordered separately)
Mounting	19" 1U (brackets included)
Extensions	VT485m Modbus RTU extension slot or VT485r OSDPv2 reader extension slot
Warranty	3 years
Support	On-line portal



Supports



Centralized Monitoring & Control

- Responsive Web Interface
- SNMP v1, v2c, v3



Scalability

- Extension units, LTE modem, OSDPv2, Modbus
- Modbus TCP/IP, 4-20mA, 0-10V, Analog, CAN



Improved security

- OpenVPN, SSL, HTTPS
- Three-tier data access permissions with login



Protocol support

- DHCP, HTTP, HTTPS, DynDNS, SMTP, RADIUS,
- Syslog, NTP server, HTTP request



Application Programming Interface

- XML, JSON



System Usability

- Multi-language mobile interface
- First-time wizard
- Sensor graphing for single & multiple sensors



Virtual sensors / devices / elements

- PING, Timers, Triggers, Logic schemes,
- IP cameras, Groups, Math, SNMP GET



Notifications and alerts

- E-mail, SMS, Phone dial, SNMP Traps, SMS link
- Web-to-SMS,



Logging

- SD card, USB flash, E-mail, FTP

Specifications

CPU Speed / RAM / OS	2 cores, 960mHz / 128Mb / Linux v.6.2
Ethernet	10/100Mbps
Redundant power	x2 100-240V AC 50/60Hz inputs, x1 12V DC Other order options exist (e.g. 24-48V DC)
USB port	For USB camera, USB flash, USB hub
Analog ports	x8 ports for sensors (extendable)
CAN port	x1 port (max. 32 sensors & extensions)
Dry Contact inputs	x32 dry contact inputs
Dry Contact outputs	x8 dry contact outputs
Relays (12V DC)	x2 outputs, 0.25A each
Relays (NC/NO/COM)	x2 bistable power relays terminals
Micro SD card slot	Up to 512 Gb SDHC
LTE slot modem	Ethernet, SMS (modem ordered separately)
Mounting	19" 1U (brackets included)
Extension slot	VT485m Modbus RTU extension slot or VT485r OSDPv2 reader extension slot
Battery extension slot	VT-ACCU Rechargeable reservation batteries or VT-BAT Reservation battery 6F22 9V
Warranty	3 years
Support	On-line portal



Supports



Centralized Monitoring & Control

- Responsive Web Interface
- SNMP v1, v2c, v3



Scalability

- Extension units, LTE modem, OSDPv2, Modbus
- Modbus TCP/IP, 4-20mA, 0-10V, Analog, CAN



Improved security

- OpenVPN, SSL, HTTPS
- Three-tier data access permissions



Protocol support

- DHCP, HTTP, HTTPS, DynDNS, SMTP, RADIUS,
- Syslog, NTP server, HTTP request



Application Programming Interface

- XML, JSON



System Usability

- Multi-language mobile interface
- First-time wizard
- Sensor graphing for single & multiple sensors



Virtual sensors / devices / elements

- PING, Timers, Triggers, Logic schemes,
- SNMP GET, IP cameras, Groups, Math



Notifications and alerts

- E-mail, SMS, Phone dial, SNMP Traps,
- Web-to-SMS, SMS link



Logging

- SD card, USB flash, E-mail, FTP

VT-PDU 4PS Switched PDU

- Switched per outlet
- Managed Power Distribution Unit

NEW!



VT-PDU 4PS Switched & Metered PDU

- Switched & Metered per Outlet
- Managed Power Distribution Unit

NEW!



Specifications

CPU Speed / RAM / OS	2 cores, 720mHz / 128Mb / Linux v.6.2
Ethernet	10/100Mbps
Outlets	Switched per outlet manually or using logic. x4 IEC C13 outlets, 110-240V AC, 50/60 Hz.
Inlet	IEC C14 inlet, 110-240V AC, 50/60Hz, Fuse 10A
Reserve power	12V DC terminal for PCB power reservation
USB Type-C	For USB camera, USB flash, USB hub
CAN port	Connect up to x32 sensors & extensions
LAN	Ethernet 10/100 Base-T port
SD memory slot	Up to 512 Gb SDHC
Mounting	Wall, 19", or Vertical bar (purchased separately)
Warranty	3 years
Support	Online portal

Supports

- Centralized Monitoring & Control**
 - Responsive Web Interface
 - SNMP v1, v2c, v3
- Scalability**
 - CAN sensor and extensions
 - Modbus TCP/IP, 4-20mA, 0-10V,
- Improved security**
 - OpenVPN, SSL, HTTPS
 - Three-tier data access permissions with login
- Protocol support**
 - DHCP, HTTP, HTTPS, DynDNS, SMTP, RADIUS,
 - Syslog, NTP server, HTTP request
- Application Programming Interface**
 - XML, JSON
- System Usability**
 - Multi-language mobile interface
 - First-time wizard
 - Sensor & outlet parameters graphing
- Virtual sensors / devices / elements**
 - PING, Timers, Triggers, Logic schemes,
 - SNMP GET, IP cameras, Groups, Math
- Notifications and alerts**
 - E-mail, SMS, Phone dial, SNMP Traps,
 - Web-to-SMS, SMS link
- Logging**
 - SD card, USB flash, E-mail, FTP



Specifications

CPU Speed / RAM / OS	2 cores, 720mHz / 128Mb / Linux v.6.2
Ethernet	10/100Mbps
Outlets	Switched per outlet manually or using logic. x4 IEC C13 outlets, 110-240V AC, 50/60 Hz.
Metered parameters	Metered per outlet: Voltage, Current, Power, Frequency, Active & Real power, Active & Real energy
Inlet	IEC C14 inlet, 110-240V AC, 50/60Hz, Fuse 10A
Reserve power	12V DC terminal for PCB power reservation
USB Type-C	For USB camera, USB flash, USB hub
CAN port	Connect up to x32 sensors & extensions
LAN	Ethernet 10/100 Base-T port
SD memory slot	Up to 512 Gb SDHC
Mounting	Wall, 19", or Vertical bar (purchased separately)
Warranty	3 years
Support	Online portal

Supports

- Centralized Monitoring & Control**
 - Responsive Web Interface
 - SNMP v1, v2c, v3
- Scalability**
 - CAN sensor and extensions
 - Modbus TCP/IP, 4-20mA, 0-10V,
- Improved security**
 - OpenVPN, SSL, HTTPS
 - Three-tier data access permissions with login
- Protocol support**
 - DHCP, HTTP, HTTPS, DynDNS, SMTP, RADIUS,
 - Syslog, NTP server, HTTP request
- Application Programming Interface**
 - XML, JSON
- System Usability**
 - Multi-language mobile interface
 - First-time wizard
 - Sensor & outlet parameters graphing
- Virtual sensors / devices / elements**
 - PING, Timers, Triggers, Logic schemes,
 - SNMP GET, IP cameras, Groups, Math
- Notifications and alerts**
 - E-mail, SMS, Phone dial, SNMP Traps,
 - Web-to-SMS, SMS link
- Logging**
 - SD card, USB flash, E-mail, FTP



VT604t Switched PDU

- Remotely device On/Off switching
- Redundant Power & Network

VT608t Switched PDU

- Remotely device On/Off switching
- Monitor 100 sensors, 700 elements

Specifications

CPU Speed / RAM / OS	2 cores, 720mHz / 128Mb / Linux v.6.2
Ethernet	10/100Mbps
Outlets	x4 C13 outlets, 110-240V AC, 50/60 Hz.
Inlet	C14 inlet, 110-240V AC, 50/60Hz, Fuse 10A
Reserve power	12V DC terminal
USB micro	For USB camera, USB flash, USB hub
Analog ports	x2 ports for sensors (extendable using CAN)
CAN port	Connect up to x32 sensors & devices
Dry Contact inputs	x2 dry contact inputs
LAN	Ethernet 10/100 Base-T port
Relays (12V DC)	x2 outputs, 0.25A each
SD card slot	Up to 512 Gb SDHC
LTE slot modem	Ethernet, SMS (modem ordered separately)
Mounting	19" 1U (brackets included)
Extension slot	VT485m Modbus RTU extension slot or VT485r OSDPV2 reader extension slot
Battery extension slot	VT-ACCU Rechargeable reservation battery or VT-BAT Reservation battery 6F22 9V
Warranty	3 years
Support	On-line portal



Supports

Centralized Monitoring & Control

- Responsive Web Interface
- SNMP v1, v2c, v3

Scalability

- Extension units, LTE modem, OSDPV2, Modbus
- Modbus TCP/IP, 4-20mA, 0-10V, Analog, CAN

Improved security

- OpenVPN, SSL, HTTPS
- Three-tier data access permissions with login

Protocol support

- DHCP, HTTP, HTTPS, DynDNS, SMTP, RADIUS, Syslog, NTP server, HTTP request

API

Application Programming Interface

- XML, JSON

System Usability

- Multi-language mobile interface
- First-time wizard
- Sensor graphing for single & multiple sensors

Virtual sensors / devices / elements

- PING, Timers, Triggers, Logic schemes, IP cameras, Groups, Math, SNMP GET

Notifications and alerts

- E-mail, SMS, Phone dial, SNMP Traps, SMS link, Web-to-SMS,

Logging

- SD card, USB flash, E-mail, FTP

Specifications

CPU Speed / RAM / OS	2 cores, 720mHz / 128Mb / Linux v.6.2
Ethernet	10/100Mbps
Outlets	x8 C13 outlets, 110-240V AC, 50/60 Hz.
Inlet	C20 inlet, 110-240V AC, 50/60Hz, Fuse 16A
Reserve power	12V DC terminal
USB micro	For USB camera, USB flash, USB hub
Analog ports	x2 ports for sensors (extendable using CAN)
CAN port	Connect up to x32 sensors & devices
Dry Contact inputs	x2 dry contact inputs
LAN	Ethernet 10/100 Base-T port
Relays (12V DC)	x2 outputs, 0.25A each
SD card slot	Up to 512 Gb SDHC
LTE slot modem	Ethernet, SMS (modem ordered separately)
Mounting	19" 1U (brackets included)
Extension slot	VT485m Modbus RTU extension slot or VT485r OSDPV2 reader extension slot
Warranty	3 years
Support	On-line portal



Supports

Centralized Monitoring & Control

- Responsive Web Interface
- SNMP v1, v2c, v3

Scalability

- Extension units, LTE modem, OSDPV2, Modbus
- Modbus TCP/IP, 4-20mA, 0-10V, Analog, CAN

Improved security

- OpenVPN, SSL, HTTPS
- Three-tier use access permissions

Protocol support

- DHCP, HTTP, HTTPS, DynDNS, SMTP, RADIUS, Syslog, NTP server, HTTP request

API

Application Programming Interface

- XML, JSON

System Usability

- Multi-language mobile interface
- First-time wizard
- Sensor graphing for single & multiple sensors

Virtual sensors / devices / elements

- PING, Timers, Triggers, Logic schemes, SNMP GET, IP cameras, Groups, Math

Notifications and alerts

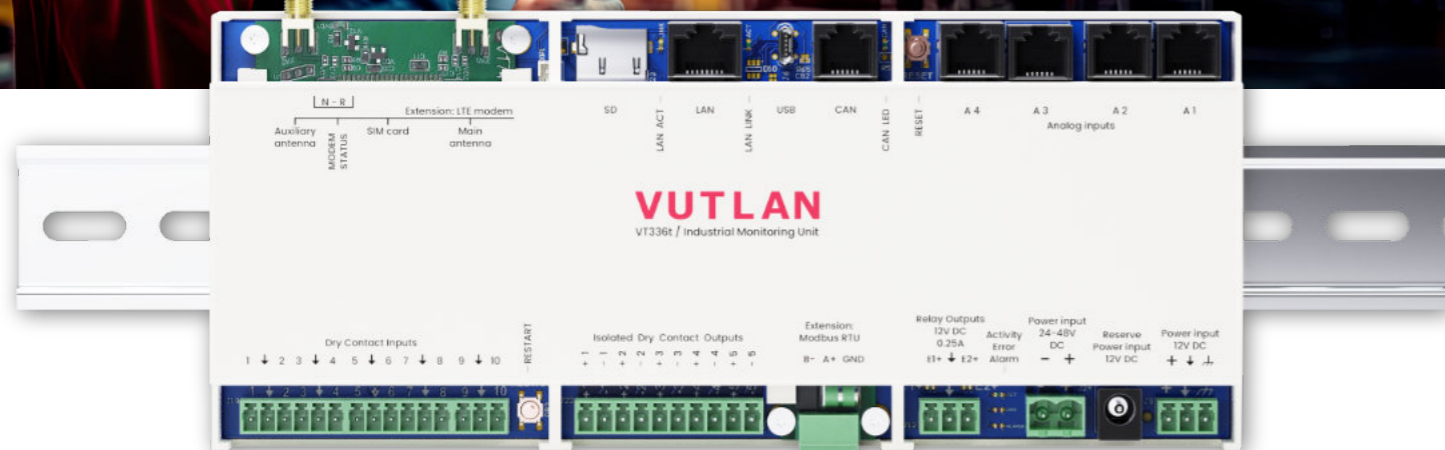
- E-mail, SMS, Phone dial, SNMP Traps, SMS link, Web-to-SMS,

Logging

- SD card, USB flash, E-mail, FTP

VT336t Industrial Monitoring Unit

- Monitor 100 sensors, 700 elements
- Redundant Power & Network
- DIN Mounting



Specifications

CPU Speed / RAM / OS	2 cores, 720mHz / 128Mb / Linux v.6.2
Ethernet	10/100Mbps
Redundant power	x2 12V DC inputs, x1 24-48V DC
USB port	For USB camera, USB flash, USB hub
Analog ports	x4 ports for sensors (extendable)
CAN port	x1 port (max. 32 sensors & extensions)
Dry Contact inputs	x10 digital inputs
Dry Contact outputs	x5 digital outputs
Relays (12VDC)	x2 outputs, 0.25A each
Micro SD card slot	Up to 256 Gb SDHC
LTE slot modem	Ethernet, SMS (modem ordered separately)
Mounting	DIN rail, Wall
Extensions	VT485m Modbus RTU extension VT740 LTE slot modem
Warranty	3 years
Support	On-line portal

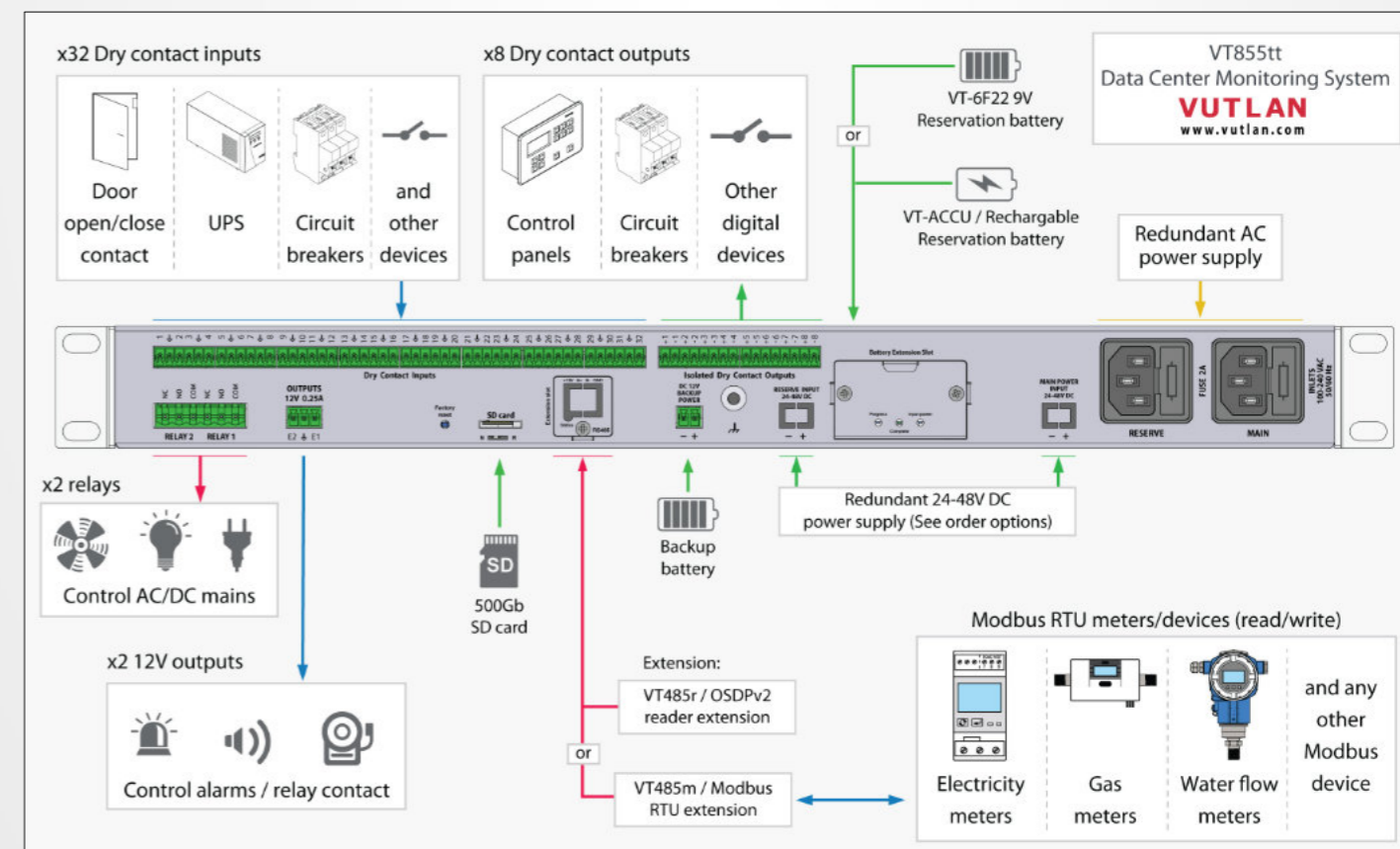
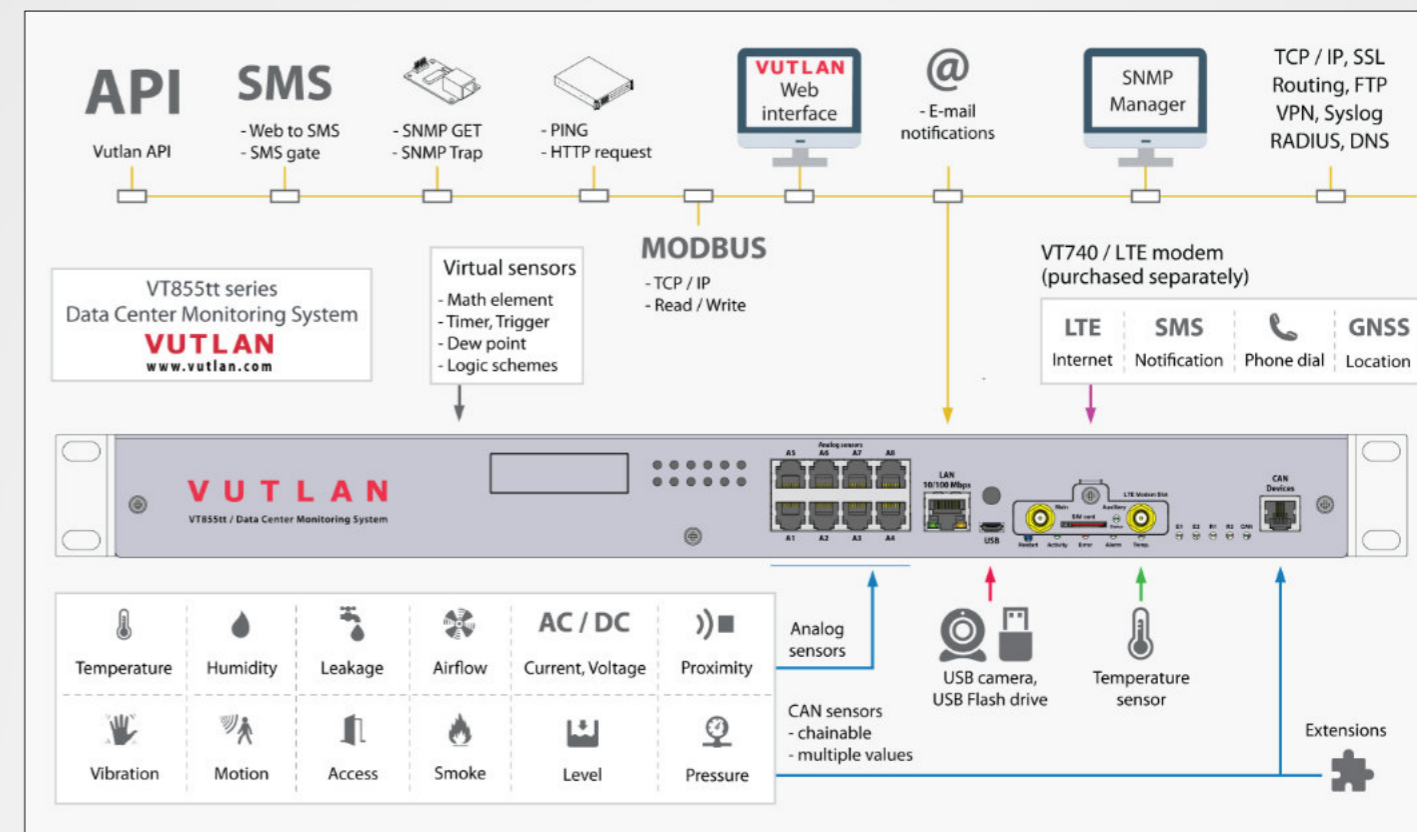


www.vutlan.com

Supports

- Centralized Monitoring & Control**
 - Responsive Web Interface
 - SNMP v1, v2c, v3
- Scalability**
 - Extension units, LTE modem, Modbus RTU
 - Modbus TCP/IP, 4-20mA, 0-10V, Analog, CAN
- Improved security**
 - OpenVPN, SSL, HTTPS
 - Three-tier data access permissions with login
- Protocol support**
 - DHCP, HTTP, HTTPS, DynDNS, SMTP, RADIUS, Syslog, NTP server, HTTP request
- Application Programming Interface**
 - XML, JSON
- System Usability**
 - Multi-language mobile interface
 - First-time wizard
 - Sensor graphing for single & multiple sensors
- Virtual sensors / devices / elements**
 - PING, Timers, Triggers, Logic schemes, IP cameras, Groups, Math, SNMP GET
- Notifications and alerts**
 - E-mail, SMS, Phone dial, SNMP Traps, SMS link, Web-to-SMS
- Logging**
 - SD card, USB flash, E-mail, FTP

Example connection VT855tt / Data Center Monitoring Unit



Monitoring your infrastructure 24/7

www.vutlan.com

VT7670 4G Modem

- Network reservation
- Ethernet access
- SMS notifications

4G



Allows to receive and send SMS and provides network reservation: e.g. if the LAN connection fails, the Ethernet connection is secured using 4G.

Frequency Bands:

- LTE-FDD: B1/B3/B5/B7/B8/B20
- GSM: 900/1800MHz

LTE(Mbps):

- 10(DL)/5(UL)

Extension

Can be installed in VT335t, VT336t, VT825t, and VT855t monitoring systems.

RoHS, REACH, CE-RED



VUTLAN
SOLUTIONS
www.vutlan.com

VT485m & VT485d Modbus Extension

Monitor:

- Modbus RTU
- Up to 32 devices
- Up to 1000 meters
- 3rd party devices

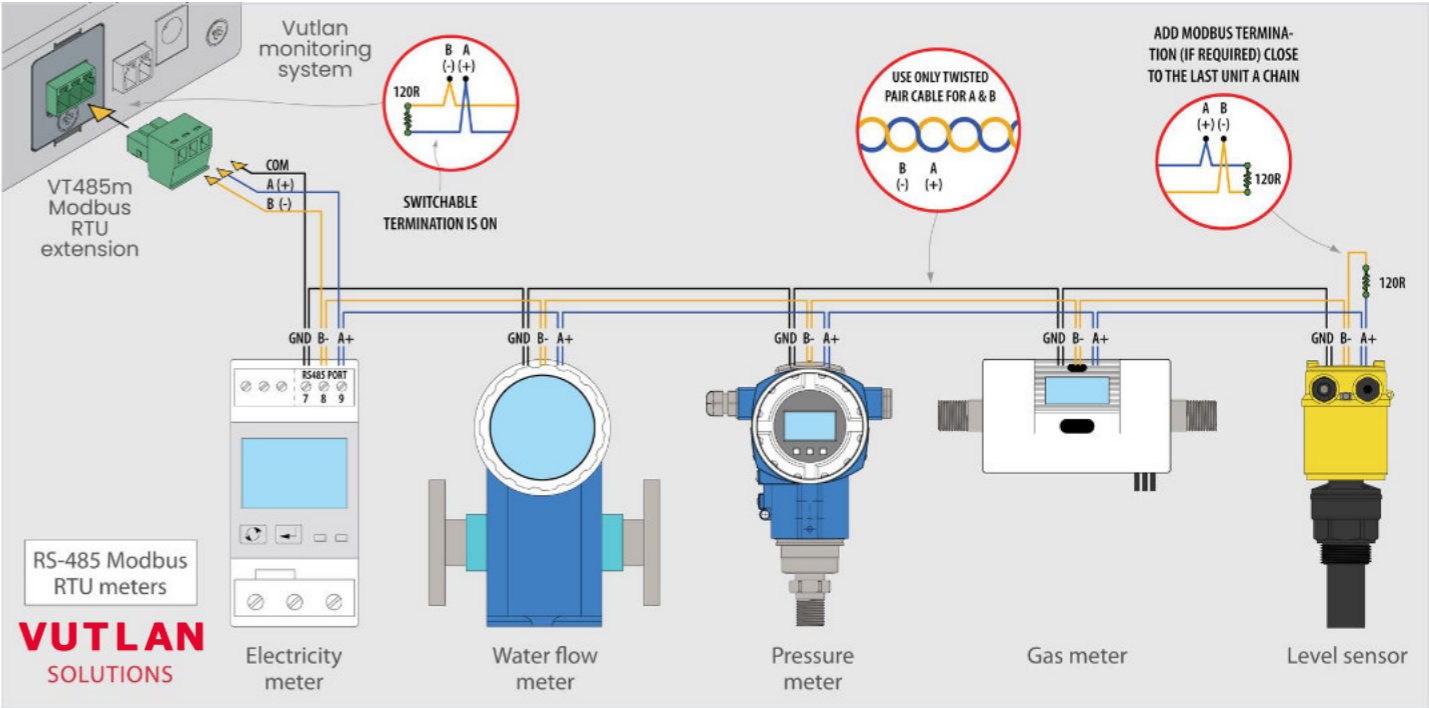
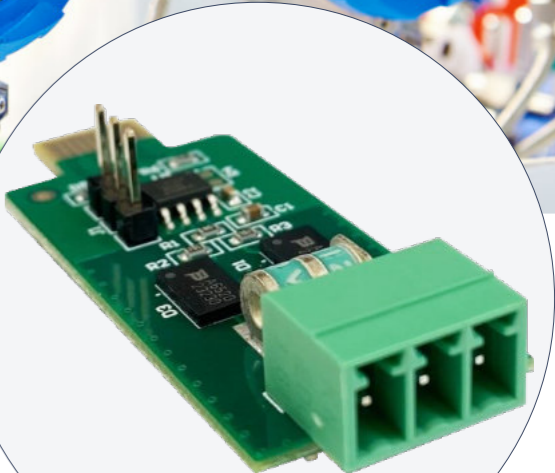
VT485m & VT485d Modbus

extensions allow to monitor up to 32 Modbus RTU devices/meters/sensors. The maximum distance of a daisy chain is up to 1000 meters. Each metered value of a Modbus device is addressed individually using input registers and is shown by the system as virtual sensors. You can configure thresholds and icon representations for these elements.

Models:

VT485m: for VT335t, VT825t, and VT855t units

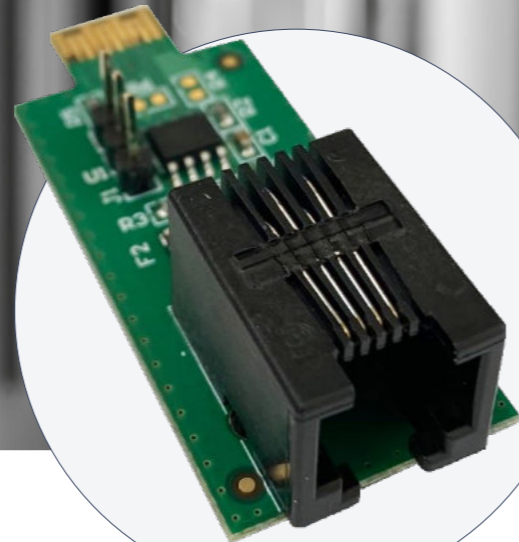
VT485d: for VT336 unit



VT485r Reader Extension Slot

- Readers / Keypads
- OSDPv2
- Up to 1000 meters

VUTLAN
www.vutlan.com



The **VT485r Reader slot** is an extension unit designed to expand your Vutlan monitoring and control system's capabilities. It allows the seamless connection of readers and keypads that support the OSDP (Open Supervised Device Protocol) for secure communication.

Distance: up to 1000 m from VT485r
Inputs/Outputs: 4P4C, RS-485
Interface: OSDPv2



Extension

Can be installed in VT335t, VT336t, VT825t, VT855t, and VT960t monitoring systems.

RoHS, REACH, CE

8CD Slim reader

- Tolerates moisture and dust
- Vandal-proof
- Reliable optical tamper
- OSDPV2
- Low power consumption
- Smaller energy costs

Highly secure, open technology MIFARE DESFire reader in a range of housings and keypads up to moisture, dust, and vandal proof, compatible with other manufacturers' DESFire devices. The reader is used together with VT485r OSDPV2 reader extension slot



Overall Features

- ▶ Tolerates moisture and dust. High protection class; IP54-IP67.
 - ▶ Vandal-proof: Impact resistance from IK-09 to IK-10
 - ▶ Reliable optical tamper reduces false tamper alarms OSDPV2 version.
- Low power consumption - smaller energy costs

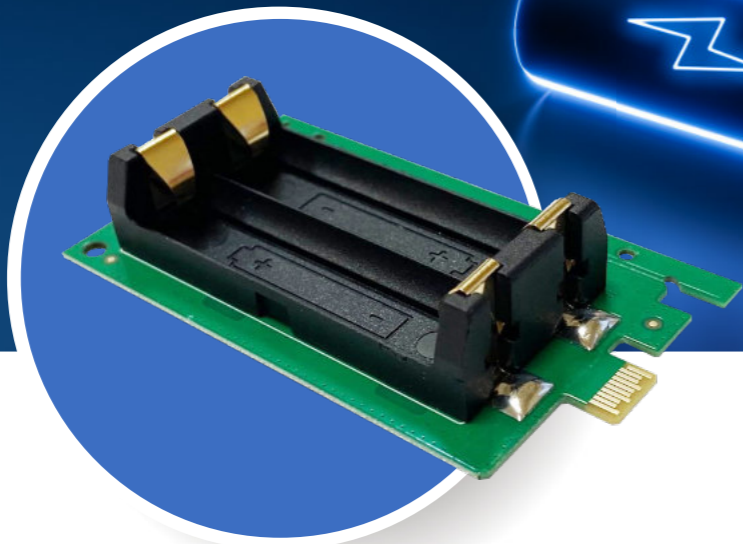


VUTLAN
www.vutlan.com

VT-ACCU Rechargeable Backup Battery

- Extension module

VUTLAN
www.vutlan.com

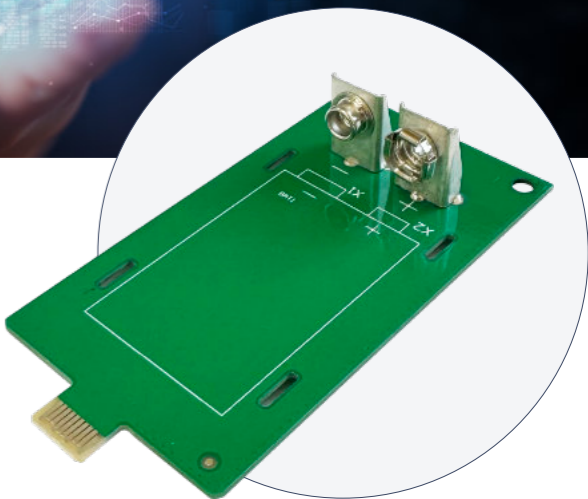


VT-BAT Backup Battery

- Extension unit
- 6F22 9V lithium
- Non-rechargeable
- From 1 to 10 hours



VT-BAT Backup Battery keeps your Vutlan monitoring systems operational with the VT-BAT 6F22 9V Backup Battery while the main power source is disabled. Designed for emergency use during power failures, this non-rechargeable battery provides dependable backup to safeguard your critical infrastructure when needed most.



VT-ACCU Rechargeable Backup Battery keeps the device operational while the main power source drops. While in operation, the batteries are charged. If the main power input voltage drops, the unit will work from VT-ACCU rechargeable batteries until the batteries are discharged.

VT-ACCU extension is used for VT825t, and VT855t Monitoring systems and VT604t , VT608t power distribution units. Rechargeable batteries are not included.



The device uses a non-rechargeable 6F22 9V lithium battery. The Vutlan monitoring system may work from this battery for approximately 1 to 10 hours.

It is used for VT604t, VT825t, and VT855t.Vutlan monitoring systems. 9V battery is not included.



VUTLAN
SOLUTIONS
www.vutlan.com

VT490 Humidity & Temperature Sensor

- CAN sensor
- Chainable



VT490 is a high-quality humidity and temperature sensor with a reliable price. By connecting several VT490 in a CAN daisy chain you can measure temperature and humidity parameters in each location of a room.

Detects	Humidity & Temperature
Sensor type	Digital CAN sensor
Inputs / Outputs	x2 RJ11 6P4C ports
Daisy chain	Yes, the daisy chain is possible for all CAN sensors.
Temperature accuracy	±0.4 °C (max), -10 to 85 °C
RH accuracy:	± 3% RH (max), 0-80% RH
Resolution	0,1 °C
Working temperature	-40 to +100 °C

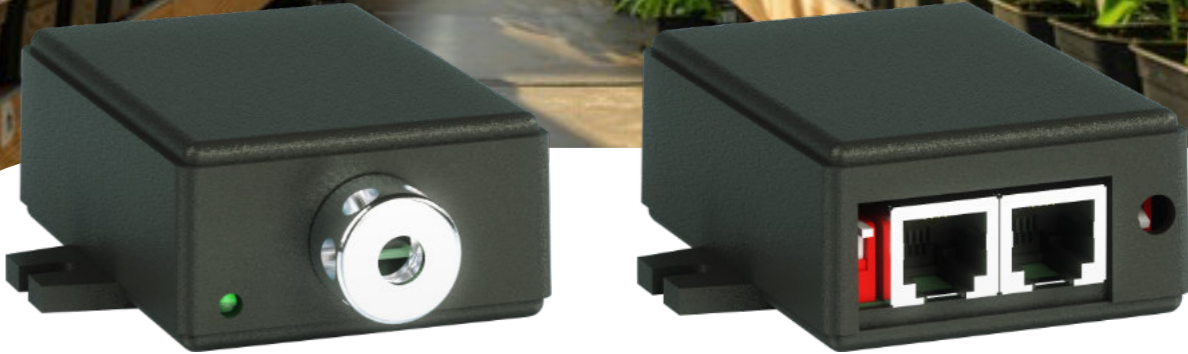
Working humidity	0 to 95% RH
Power input	12V DC, 1A
Current consumption	1 Watt
Maximum distance	225m
Dimensions	68x47x26 mm
Mounting options	Desktop, Wall mount
GTIN	8588009886297
HS Code	9025 11 800

VUTLAN
SOLUTIONS
www.vutlan.com



VT450 Pressure, Humidity & Temperature Sensor

- Extension unit
- Non-rechargeable
- 6F22 9V lithium
- From 1 to 10 hours



VT450 is a high-quality pressure, humidity, and temperature digital CAN sensor with a reliable price. Designed for precision environmental monitoring, the VT450 can be daisy-chained using a CAN bus to connect multiple units, allowing for accurate measurement of temperature and humidity at various points within a room

Detects	Pressure, Humidity, Temperature
Sensor type	Digital CAN sensor
Inputs / Outputs	x2 RJ11 6P4C ports
Daisy chain	Yes
Pressure RMS noise	0.2Pa (equivalent to 1.7cm)
Pressure error	±0.25% (1m at 400m)
Pressure from °C	±1.5Pa/K (±12.6cm at 1 °C)
RH accuracy	± 3% RH (max)
Hysteresis	≤2% RH
Response time	1 s
Temperature accuracy	1.5°C
Working pressure	300 to 1100 hPa
Temperature accuracy	±0.4 °C (max), -10 to 85 °C
RH accuracy	± 3% RH (max), 0-80% RH
Resolution	0,1 °C

Working temperature	-40 to +100 °C
Working humidity	0 to 95% RH
Power input	12V DC, 1A
Current consumption	1 Watt
Maximum distance	225m
Dimensions	68x47x26 mm
Mounting options	Desktop, Wall mount
GTIN	8588009886518
HS Code	9025 11 800

VUTLAN
SOLUTIONS
www.vutlan.com



VT460 Smoke, Humidity & Temperature Sensor

- CAN sensor
- Chainable



The **VT460** is a versatile sensor that combines smoke, humidity, and temperature monitoring in a single unit. It features high smoke sensitivity, allowing it to detect even low concentrations of smoke, making it an essential tool for early fire detection in critical environments. Additionally, the VT460 provides precise measurement of temperature and humidity, ensuring comprehensive environmental monitoring.

Detects	Smoke, Humidity, Temperature
Sensor type	Digital CAN sensor
Smoke detection	Photoelectric
Inputs / Outputs	x2 RJ11 6P4C ports
Daisy chain	Up to 32 sensors
Maximum height	6 meters
Working temperature	From -10° to C +80° C
Working humidity	0 to 95% RH

Power input	12V DC, 1A
Current consumption	100 mW
Maximum distance	225m
Dimensions	68x47x26 mm
Mounting options	Desktop, Wall mount
GTIN	8588009886518
HS Code	8531 10 300

VUTLAN
SOLUTIONS
www.vutlan.com



CAN-12V-1A CAN Power Supply



VUTLAN
www.vutlan.com

The additional power supply is needed only if the number of sensors in a CAN bus chain is more than 12 sensors. **CAN-12V-1A** supplies power for each additional group of 12 CAN devices (sensors and extensions).

CAN devices and sensors can be chained together. Up to 10-32 CAN devices can be connected in a chain. You can connect CAN sensors or extensions on a CAN bus line.

Sensor type	Digital CAN sensor
Inputs / Outputs	x2 RJ11 6P4C ports
Daisy chain	Up to 32 sensors
Power	Power for each x12 CAN devices
LED indicators	Green (Status On/Off)
Working temperature	-40 to +100 °C
Working humidity	0 to 95% RH
Power input	12V DC, 1-2A, D3.4/1,35 mm
Dimensions	68x47x26 mm
Mounting options	Desktop, Wall mount
GTIN	8588009886471
HS Code	8504 40 90



VUTLAN
SOLUTIONS
www.vutlan.com

VT408 Analog Sensor Extension Unit

- Adds x8 analog ports
- Extends distance
- CAN extension
- Daisy chainable



The **VT408** is an extension unit that increases the number of analog sensors connected to any Vutlan monitoring unit. Each VT408 adds 8 analog sensor ports, allowing for greater scalability in monitoring complex environments. Multiple VT408 units, along with other CAN devices or sensors, can be daisy-chained via the CAN bus port for efficient expansion. All connected sensors are automatically detected and integrated into the system, simplifying setup and ensuring seamless critical infrastructure monitoring.

Device type	CAN bus device
Inputs / Outputs	x8 RJ11 6P4C ports, x2 CAN ports RJ-12
Daisy chain	Up to x24 units in a chain
Power	12V DC
Max. Distance	225m
Mounting options	VT123 / Wall mount brackets (ordered separately) VT125t / 19" 1U Mounting kit for x2 VT408 units (ordered separately)

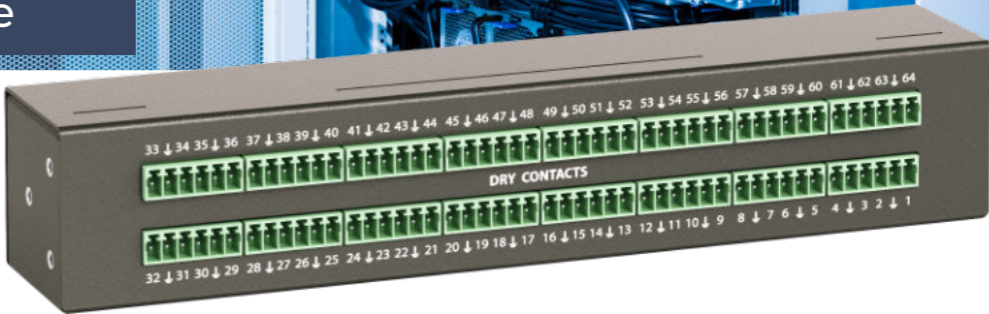


VUTLAN
SOLUTIONS
www.vutlan.com



VT440 Dry Contact Extension Unit

- Monitor:
- UPS
 - General, fault Alarm
 - System Healthy status
 - Door, window status
 - HVAC on/off state



The **VT440 Dry Contact Extension Unit** increases the number of dry contact input terminals connected to any Vutlan monitoring unit. Each VT440 adds 32 dry contacts, providing scalable monitoring capabilities for complex infrastructures. Multiple VT440 units can be chained using CAN bus port.

The number of dry contacts inside VT440 can be increased up to 64 with an extension module "VT32 / dry contacts module".

Device type	CAN bus device
Inputs / Outputs	x32 dry contacts inputs terminals (2 wires), x2 CAN ports RJ-12
Daisy chain	Yes
Status Indicators	Red (Error), Green Led (RUN)
Max. Distance	225m
Mounting possibilities	19" rack-mountable, Desktop, Wall mount
Order options	"VT440" with x32 contacts or "VT440 + VT32" with x64 contacts
HS Code:	8471 50 000
GTIN	8588009886266



VUTLAN
SOLUTIONS
www.vutlan.com



VT500 Temperature Sensor

- Very precise
- Analog sensor
- Plug-and-Play
- Indoor



VT500 Temperature sensor is an analog plug-and-play temperature sensor for indoor use only. Can be connected to any of the analog ports (A1...A8) of Vutlan monitoring systems. The accuracy of the sensor is $\pm 0.15\text{ }^{\circ}\text{C}$ at room temperature. The maximum distance from the monitoring unit (or sensor extension unit) is 100 meters.

Device type	Analog sensor
Output	x1 RJ11 6P4C port
Operating temperature	From -10° C to +80° C
Operating humidity	0 to 95 % (non condensing)
Max. Distance	100m from the unit
Accuracy	$\pm 0.5\text{ }^{\circ}\text{C}$ at room temperature
HS Code	9025 11 800
EAN code	8588009886112



VUTLAN
SOLUTIONS
www.vutlan.com

VT501 Outdoor Temperature Sensor

- Outdoor
- Working in Glycerine
- Cold storage rooms



This analog plug-and-play **VT501** temperature sensor is designed for measuring temperatures in outdoor or cold environments. It can be connected to any analog port of a Vutlan monitoring unit for seamless integration. Its reliable performance makes it ideal for monitoring outdoor conditions or maintaining temperature-sensitive areas such as cold storage rooms. With automatic detection and simple installation, the sensor provides accurate temperature readings and immediate alerts for better environmental control.

Device type	Analog sensor
Output	RJ-11 6P4C
Product dimensions	$\varnothing 7 \times 30\text{ mm}$
Cable length	15 meters
Operating temperature	Temperature: Min. -40° C - Max.+105° C
Maximum distance	100 meters
Accuracy	$\pm 1.5\text{ }^{\circ}\text{C}$
GTIN	8588009886266
HS Code	9025 11 800
GTIN	8588009886266



VUTLAN
SOLUTIONS
www.vutlan.com

VT510 Humidity Sensor

- Relative humidity
- Analog sensor
- Plug-and-Play
- Indoor

VUTLAN
www.vutlan.com



The **VT500** Analog Plug-and-Play Sensor is designed for measuring relative humidity levels indoors, ranging from 10% to 95%. With a relative accuracy of 3%, it provides precise monitoring for environments where humidity control is critical. The VT500 can be easily connected to any analog port (A1...A8) of a Vutlan monitoring unit, ensuring seamless integration and real-time data collection for effective environmental management. Ideal for data centers, server rooms, and other controlled environments.

Device type	Analog sensor
Output	x1 RJ11 6P4C port
Operating temperature	From -10° C to +80° C
Operating humidity	0 to 95 % indoors
Max. Distance	50m from the unit
Accuracy	3% RH
HS Code	9025 11 800
EAN code	8588009886112



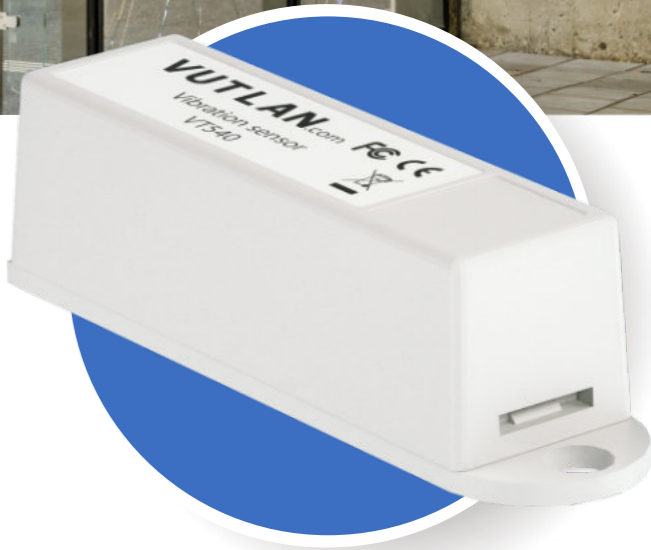
VT540 Vibration Sensor

- Intrusion Detection
- Building and Structural Monitoring
- Equipment Monitoring
- Vibration-sensitive Areas

The **VT540** Vibration Sensor is designed to detect and monitor vibrations when installed on surfaces such as walls or windows. It can detect events like window breakage by an intruder when installed on window glass. The sensor connects to any analog port (A1...A8) of the Vutlan monitoring unit, offering real-time vibration monitoring.

Device type	Analog sensor, Plug&Play
Output	x1 RJ11 6P4C port
Operating temperature	From -10° C to +80° C
Operating humidity	0 to 95 % indoors
Max. Distance	150m from the unit
Power consumption	60mW
HS Code	9025 11 800
EAN code	8588009886174

VUTLAN
SOLUTIONS
www.vutlan.com



VT520 AC Voltage Monitor

LVD, RoHS, REACH, CE, FCC



VT520DIN AC Voltage Monitor

LVD, RoHS, REACH, CE, FCC



Ensure stable power conditions with the **VT520 AC Voltage Monitor**. Designed for real-time monitoring of AC voltage levels, it helps protect critical infrastructure by detecting fluctuations and power anomalies. Easily integrated with Vutlan's monitoring systems for instant alerts and automatic actions. The sensor measures AC voltage 0-246V. Interchangeable plug types for Europe, the US, China, Australia, and South Africa for power sockets or power strips with IEC C14 outlets.

The **VT520 AC Voltmeter** is essential for precise measurement of AC voltage from 0-246V, offering high accuracy of 1%. This plug-and-play analog sensor can be connected to any analog port (A1...A8) of the Vutlan monitoring unit, allowing for real-time monitoring of electrical equipment in racks. Designed for easy DIN rail mounting, it's perfect for electrical and equipment racks.

Device type	Analog sensor, Plug&Play	Power Consumption	60 mW
Accuracy	1 %	Operating temperature	From -10° C to +80° C
Measured voltage	0 .. 246 V, AC	Maximum distance	100 m from the unit
Product dimensions	63×40×67 mm	HS Code	9030 33 300
Cable length	1.8 m	GTIN	8588009886143
Output	USB to RJ11 6P4C	Certificates	LVD, ROHS, CE
Input	EU, US, AU, SA, UK		

VUTLAN
SOLUTIONS
www.vutlan.com



VUTLAN
www.vutlan.com

Device type	Analog sensor, Plug&Play
Measured voltage	0-246V, AC
Accuracy	1%
Protection	IP20H / IP40H
Dimensions	DIN 2M, H90.2mm, W36.3mm, D57.5mm
Outputs	x1 autosense port, RJ-11 (6P4C)
Inputs terminals	Strip length 6-7mm, Wire cross 2.5mm ² 22~12AWG
Power Consumption	60 mW
Operating temperature	From -10° C to +80° C
Operating humidity	Min. 5% - Max. 95% RH (Non-Condensing)
Maximum distance	100 m
HS Code	9030 33 300
GTIN	8588009886150

VT530 Access Sensor

- Access control
- Intrusion Detection
- Security Surveillances
- Analog sensor



The **VT530 Access Sensor** is essential for access control and is designed to monitor the status of doors and windows (open or closed). It consists of two parts: a magnet and a sensor, ensuring accurate detection of access points being opened or closed. It can be connected to any analog port (A1...A8) of the Vutlan monitoring unit and supports daisy chaining, allowing multiple sensors to be linked in a series for easy and scalable installations.

Device type	Analog sensor, Plug&Play	Operating humidity	From 5% to 95% (Non-Condensing)
Output	x1 RJ11 6P4C port	Mounting	Bracket, bolts, & stickers included
Daisy chain connection	Yes	Power consumption	60mW
Dimensions	600×18x18 mm	Max. distance m	150 m
Input / Output	x2 RJ11 / RJ12 (6p4c)	HS Code	8531 10 300
Operating temperature	From -10° C to +80° C	GTIN	8588009886167

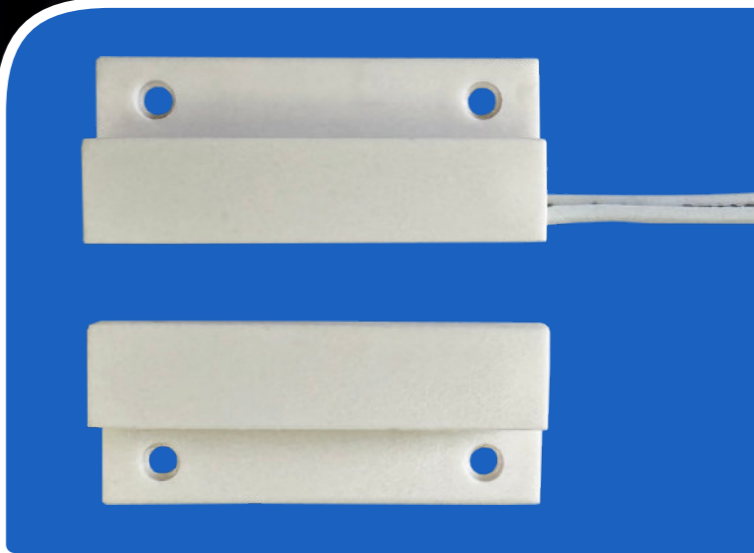


KMS-30 Access Magnet Sensor

- Access control
- Intrusion Detection
- Security Surveillances
- Dry contact

The **KMS-30** is a versatile sensor designed to detect the opening of doors, windows, garage doors, rack doors, IT rack doors, server cabinets, and enclosures where magnetic contact surveillance is required. It operates by detecting the separation of two magnetically connected parts—one mounted on the door or window, and the other on the frame.

Device type	Reed switch, dry contact
Maximum distance	500 m
Connection	Lead
Contacts configuration	SPST-NO
Operational temperature	From -10 °C to 50 °C
Operating humidity	From 5 to 95%
IP rating	IP68



Dimensions	29 x 18.8 x 6.9 mm
Operating humidity	From 5 to 95%
IP rating	IP68
Dimensions	29 x 18.8 x 6.9 mm
HS code	8531 10 300
GTIN	8588009886587



VT550 Wind Velocity Meter

- HVAC monitoring
- Maintain effective airflow
- Comfort management

VUTLAN
www.vutlan.com



The **VT550 Airflow Velocity Meter** is essential for measuring and maintaining effective airflow wind and airflow velocity in environments such as near air conditioners, HVAC systems, fans, and ventilation systems. It accurately monitors airflow within a range of 0 to 3 m/s. The sensor consists of two parts for easy installation and integration.

Device type	Analog sensor, Plug&Play	Operating humidity	From 5% to 95% (Non-Condensing)
Wind velocity range	0 to 3 m/s	Mounting	Mounting bracket included
Response time	0.1 seconds	Power consumption	60mW
Dimensions	600 x 18 x 18 mm	Maximum distance	50 m
Cable length	2 m	Sensitivity	Preconfigured
Inputs	RJ9 (4p4c) (wind velocity meter)	HS Code, GTIN	9026 80 200, 8588009886181
Outputs	RJ11 / RJ12 (6p4c)	Maximum distance	50 m
Operating temperature	From -10° C to +80° C		

Designed for convenience, the VT550 connects to any analog port of the Vutlan monitoring unit and is a plug-and-play device, simplifying setup and operation.



VT560 Smoke Detector

- Monitor smoke
- Indoor
- Daisy chain
- Analog sensor
- Photoelectric

The **VT560 Smoke Detector** is designed to monitor the presence of smoke indoors, making it essential for safety in various environments. It is suitable for installation in rooms, building facilities, server racks, and other areas where the risk of smoke or fire may arise.

Device type	Analog sensor, Plug&Play
Technology	Photoelectric
Daisy chain	Up to 10 sensors in a chain.
Dimensions	Ø100x45 mm
Inputs/Outputs	x2 ports RJ12
Operating temperature	From -10 °C to +80° C
Operating humidity	5% to 95% (Non-Condensing)
Average lifespan	>=10 years
Power consumption	100 mW
Status Indicators	Red LED
Maximum distance	150 m
Max. installation height	6 m
HS Code	8531 10 950
GTIN	8588009886198



The sensor connects seamlessly to any analog port of the Vutlan monitoring unit and is chainable, allowing multiple smoke detectors to be linked together for comprehensive coverage.



VT570 PIR Motion Sensor

- Motion detection
- Automation systems (e.g. lights)
- Access control



The **VT570 PIR Motion Sensor** is designed to detect movement and motion using passive infrared (PIR) technology. It monitors motion over an infrared range, making it suitable for various security and automation applications.

The sensor connects to any analog port of the Vutlan monitoring unit, providing real-time motion detection alerts. The number of sensors and the maximum system length can be extended using the VT408 / Sensor extension unit, allowing for larger-scale installations.

Device type	Analog sensor
Technology	Infrared range, PIR
Cable length	2 m
Power Consumption	100 mW
Operating temperature	From -10° C to +80° C
Operating humidity	From 5% to 95% (Non-Condensing)
Mounting	Wall or ceiling, bracket included
Maximum distance	100 m
IR detection angle	110°

Detection distance	12 meters
Output	X1 RJ-11 6P4C
Dimensions	Ø99, 5 cm height
HS Code	85319000
GTIN	8588009886204

VUTLAN
SOLUTIONS
www.vutlan.com



VT572 Radar Motion Sensor

- Motion, Position, Proximity
- Object detection
- Energy-Saving Automation
- Penetrate materials



VT572 Radar motion sensor is a high-performance sensor/detector that uses microwave radar technology as a control signal source to detect objects and human movement accurately. The sensor is designed as an energy-efficient, indoor high-sensitivity detector and offers advanced performance for various environments.

The microwave signal can penetrate materials such as plastic, glass, ceilings, wooden doors, and thin walls, making it versatile for installations in concealed or hard-to-reach areas.

Device type	Analog sensor
Technology	Doppler Principle
LEDs	Green / Red
Frequency Range	5.725GHz-5.875GHz
Transmit Power	-4dBm

Antenna	Flat planar antennas
Operating Temperature	From -20 °C to +85 °C
Operating humidity	0 to 85%
Power Consumption	100 mW
Installation height	3 m
Detection angle	120° degrees
Sensing distance	10 m
Max. Induction Radius	6 m when height is 3 m
Cable length	2 meters
Output	x1 RJ-11 6p4c
Detection angle	120° degrees
HS Code	85319000

VUTLAN
SOLUTIONS
www.vutlan.com



VT580 Dust Particles Sensor

- Air pollution sensing
- Mass & Number Concentration
- Superior Precision
- Long-term Stability



VUTLAN
www.vutlan.com

VT580 dust particle sensor is used to monitor air quality and pollution. The sensor is a technological breakthrough in particle matter sensors. Its measurement principle is based on laser scattering and based on innovative contamination-resistance technology. The probe enables precise measurements from its first operation and throughout its lifetime of more than ten years.

Device type	Analog sensor, Plug&Play	Particle size range	0.3 to 10.5 µm
Usage	Air quality, pollution monitoring.	Best used in	+10...+40°C, 20%... 80% RH
Technology	Laser scattering, Contamination-resistance, Optical particle counters	Operating Temperature	From -10 to +60°C
Mass conc. precision	±10 %	Operating humidity	0 to 95% RH
Mass conc. range	0 - 1000 µg/m³	Power Consumption	Max. 400 mW in operation mode
Lifetime	more than 10 years	Cable length	2 m
Output	x1 RJ-11, 6p4c	HS Code	100 m
		GTIN	8588009886655

Protect sensitive electronics & workers from dust and airborne particles. Report pollution levels. Monitor and adjust airflow in HVAC systems to ensures that clean air standards.



USB100 USB Camera

- Alarm-Triggered Recording
- Video as a notification
- MJPEG stream format



A **USB camera** can be easily connected to any Vutlan monitoring system via a USB port, allowing it to capture and record video in the MJPEG stream format.

This solution is ideal for adding a visual layer of security ensuring that footage is captured and accessible during key moments.

Device type	USB Dome camera
Output	USB Type A
Max. Resolution	720P HD
Compression format	MJPEG
LED	24 LEDs
Power supply	Powered over a USB cable
Operating temperature	from -20 to +85°C
Size in mm	Diameter 92, Height 65.5
Cable length	5%-95% (Non-Condensing)
HS code	8525 80 30
GTIN	8588009886532

VUTLAN
SOLUTIONS
www.vutlan.com



VT591 Leak Sensor

- Water Leak Detection
- Early Warning System
- Cover area or perimeter
- Vutlan analog sensor



The **VT591 Water Leak Sensor** is designed to detect water leaks by sensing a drop in resistance along the connected WLC Water Leak Cable. This sensor requires the use of a WLC Leak Cable, which is ordered separately and available in various lengths to suit different installation needs.

Device type	Analog sensor
Dimensions	60×18×18 mm
Input	2 wire (WLC cable)
Output	x1 RJ11, 6p4c
Response time	15 sec.
Maximum distance	100 m
Operating temperature	From -10 °C to +80 °C
Operating humidity	From 5% to 95% (Non-Condensing)
HS Code	9025 80 400
GTIN	8588009886211

VT594 BMS Leak Water Sensor

- Water Leak Detection
- Early Warning System
- Cover area or perimeter
- For BMS systems

The **VT594 Water Leak Sensor** is designed for integration with BMS to provide continuous monitoring for water leaks. It works in conjunction with the WLC / Water leak cable (ordered separately) to detect the presence of moisture when water comes into contact with the cable. By placing the detection cable near or along potential flood sources, such as pipes, HVAC units, or server rooms, entire areas can be effectively monitored for leaks.



Device type	BMS sensor
Dimensions	60×18×18 mm
Input	2 wire (WLC cable)
Output	x1 RJ11, 6p4c
Response time	15 sec.
Maximum distance	100 m
Operating temperature	From -10 °C to +80 °C
Operating humidity	From 5% to 95%
HS Code	9025 80 400
GTIN	8588009886594
Order options	12V DC or 24V DC

WLC Leak cable

WLC Leak cable



VT593 Spot Leak Sensor

- Water Leak Detection
- Near Appliances
- Under Appliances, Pipes



VT593 Spot Leak Sensor detects water by measuring an increase in capacitance between two metal poles on the spot, all housed within a durable plastic casing. Unlike traditional metal-based sensors, it resists corrosion over time thanks to the low applied voltages and non-corrosive detection method. This design makes it ideal for long-term applications in environments prone to leaks.

VT593 Spot Leak Sensor	
Type	Analog sensor, Plug&Play
Input	2 wire (SLD / Spot leak detector)
Output	x1 RJ11 / RJ12, 6p4c
Dimensions	60×18×18 mm
Operating temperature	from -10 °C to +80 °C
Operating humidity	from 5% to 95%
Power consumption	60mW
Maximum distance	100 m
Response time	15 s
HS Code	9025 80 400
GTIN	8588009886228

VUTLAN
SOLUTIONS
www.vutlan.com



SLD / Spot leak detector specifications	
Detectable liquids	Clean, polluted & distilled water; acids; alkalis; alcohols, and other electrically conductive liquid
Dimensions	30 x 20 x 8 mm
Cable length	1 m
Operating humidity	from 20 to 100 % RH
Operating temperature	from -10°C to 50°C
Outputs	Two wires, RJ 4P2C plug.
Output form	NO normally open
Electrodes resistant to	Chlorine and Salt Water

WLC Leak Detection Cable

- Water, conductive liquids
- Flexible installation
- Cover area or perimeter
- Easy to clean and dry
- Daisy chain



The **WLC Leak Cable** is designed to provide comprehensive coverage for leak detection across large areas, such as under-raised floors in data centers or around sensitive equipment. It can be laid out to cover the entire perimeter of a room or specific areas that are vulnerable to leaks.

Works in	High humidity, pollution, hazardous waste
Detectable liquids	Clean, polluted & distilled water; acids; alkalis; alcohols, and other electrically conductive liquid
Diameter	6.5 mm
Order options	3m, 6m, 10m, 15m, 25m, 50m
Daisy chain connection	Yes

By positioning the cable along the edges of the floor, near water pipes, HVAC systems, or around server racks, the cable ensures that even small amounts of moisture are detected anywhere within the monitored zone.

Operating humidity	0% - 95 %
Max. cable length	100 m per sensor
Outputs	2 wires
HS Code	8544 42 10
GTIN	9025 80 400
Used together with	VT591 or VT594 models

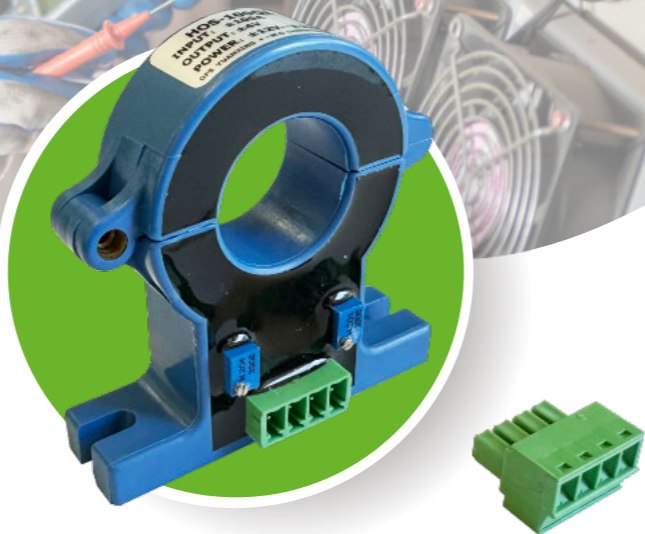
VUTLAN
SOLUTIONS
www.vutlan.com



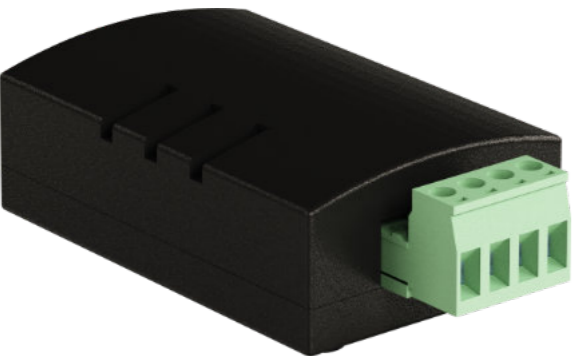
HOS-100Q1 DC Current Sensor & VT406 DC Current Converter

- DC Current Monitoring
- Energy Management
- ±100A, DC

The **HOS-100Q1** is a simple open-loop DC transducer capable of measuring DC currents in the range of ±100A. It is designed for applications where accurate current measurement is critical, such as power monitoring and energy management systems.



The **VT406 / DC current transceiver** bridges the measured data from the HOS-100Q1 transducer to the Vutlan monitoring system. This setup allows for real-time monitoring and analysis of current flow, ensuring that any irregularities in the system are detected early, which is crucial for the protection and stability of electrical systems.



HOS-100Q1 DC current sensor	
Measured current	±100A, DC
Max. isolation voltage	2kV
Max. cable diameter	10 mm
Operating temperature	From -10° C to +80° C
Operating humidity	5% - 95% (Non-Condensing)

VT406 DC Current Converter	
Type	Analog sensor, converter, adapter
Output	x1 RJ11 6P4C
Power	12 V, 1A
HS Code, GTIN	90303370, 8588009886563

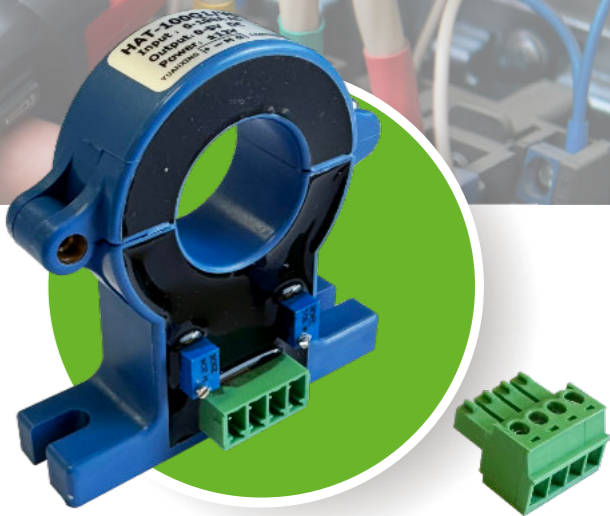


VUTLAN
SOLUTIONS
www.vutlan.com

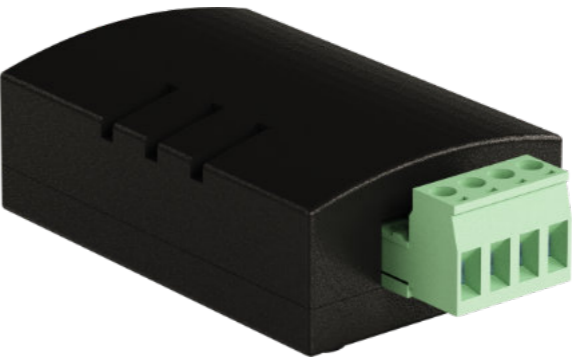
HAT-100Q1 AC Current Transducer & VT407 AC Current Converter

- AC Current Monitoring
- Power Monitoring
- 0-100A, AC

The **HAT-100Q1** is a simple open-loop AC current transducer that measures AC currents in the range of 0-100A. It is designed for monitoring and controlling power consumption and is ideal for applications where precise AC current measurements are critical.



To transfer the measured AC current data, the **VT407 AC converter** is used. It is an analog plug-and-play device that connects to any available analog port on a Vutlan monitoring unit. Providing real-time data on current consumption and enabling the system to react to overcurrent situations or electrical failures.



HAT-100Q1 AC current transducer	
Measured current	From 0 to 100A, AC
Max. isolation voltage	2kV
Max. cable diameter	10 mm
Operating temperature	From -10° C to +80° C
Operating humidity	5% - 95% (Non-Condensing)
HS Code, GTIN	9030 33 100, 8588009886549

VT407 AC current converter	
Type	Analog sensor, converter, adapter
Output	x1 RJ11 6P4C
Power	12 V, 1A
HS Code, GTIN	9030 33 100, 8588009886556



VUTLAN
SOLUTIONS
www.vutlan.com

VT410 DC Voltage Monitor

- Equipment Health
- Solar Panels
- Battery Monitoring
- Backup Systems



The **VT410 DC monitor** is a device designed for the measurement of DC voltage, converting the data into a format compatible with an Vutlan monitoring system. It allows for real-time remote monitoring of DC voltage levels in various applications, such as data centers, industrial automation, and renewable energy systems.



Device type	Analog sensor, Plug&Play
Order options by Measured range	0-15V DC, 0-75V DC
Accuracy	1%
Isolation	1 kV
Input	2-pin terminal, pitch 5mm
Output	x1 RJ11/RJ12, 6p6c
Cable length	2 m
Maximum distance	50 m
Operating temperature	from -10° C to +80° C
Operating humidity	5% - 95% (Non-Condensing)
Dimensions	60 × 18 × 18 mm
Power Consumption	100 mW
HS Code	9030 33 100
GTIN	8588009886235

VUTLAN
SOLUTIONS
www.vutlan.com



VT420 Converter 4-20mA

- Monitor Current-based Sensors
- Monitor 3rd party
- Diesel Level Sensors
- Water level sensors



VT420 is a converter of direct current 4-20mA is used for measurement of constant current on 4-20mA from different 3rd party sensors and converting data into the format of the Vutlan monitoring system. The system interface allows you to assign the sensor and introduce the function data conversion.

Device type	Analog sensor, Plug&Play	Operating temperature	From -10° C to +80° C
Usage	Current loop converter	Operating humidity	5-95% (Non-Condensing)
Measured current	4-20 mA	Dimensions	60×18×18 mm
Accuracy	2%	Isolation	Galvanic 1 kV
Output	x1 RJ-12 / RJ-11 6p4c	Power Consumption	100 mW
Input	Terminal 2P, pitch 5mm	HS Code	9030 33 100
Maximum distance	50 m	GTIN	8588009886242

VUTLAN
SOLUTIONS
www.vutlan.com



VT103 Alarm Beacon

- Sound & Light alarm
- 12V relay activated
- Immediate alert
- Notify personnel



VT105 Strobe Light

- Flashing Light alarm
- 12V relay activated
- Immediate alert
- Notify personnel



The **VT105 LED strobe light** is a 12V DC device designed to provide flashing light alerts for warnings and alarms. It connects to the 12V DC, 0.25A electronic relay output of Vutlan monitoring systems, offering a visual notification in case of triggered alarm events.

The **VT103** is designed for light and sound alarms in monitoring systems. It can be connected to a 12V DC, 0.25A electronic relay output of Vutlan monitoring systems to provide a visual or audible alert when an alarm event is triggered. This makes it ideal for scenarios where immediate local alerts are needed to inform users of system issues.

Device type	12V DC sound and light alarm
Rated voltage	12V DC, 1A
Sound pressure	108 dB
Tone frequency	3.8 kHz
Flash frequency	2.5Hz red 150/min
Operating temperature	From -50 °C to +105 °C
Operating humidity	From 5% to 95% (Non-Condensing)

IP rating standard	IP54
Power consumption	250mA
Dimensions	70 x 36 x 56 mm
Mounting	Wall mount
Cable length	3 meters
Mounting	Wall mount
Cable length	3 meters

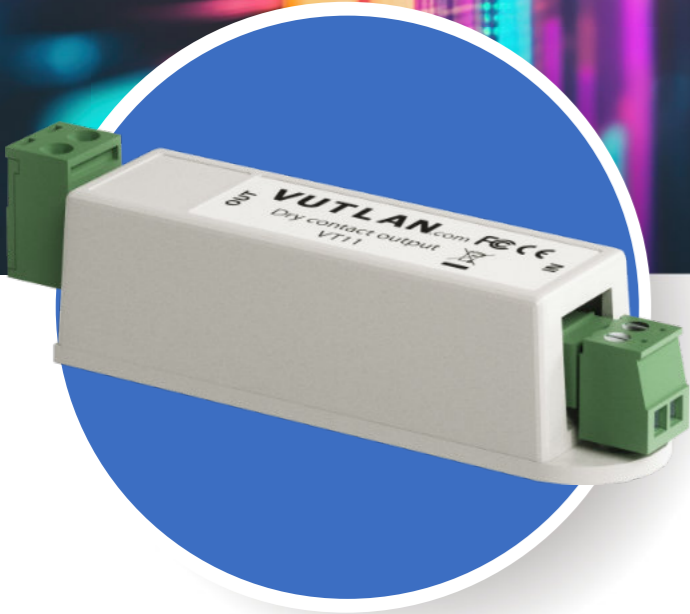
Device type	LED Security Alarm
Flashing frequency	90/Min
Input	2-wire cable (red/black)
Output	LED source
Operational temperature	From -50 °C to 50 °C
Operating humidity	From 5 to 95%
IP rating	IP54

Power	12V DC, 120mA
Power consumption	1 Watt
Dimensions in mm	Diameter 73.5, Height 45.5
Cable length	29 x 18.8 x 6.9 mm
Mounting	Wall or ceiling
HS Code	8531 10 300
GTIN	8588009886600



VT11 Dry Contact Output

- Relay Switchable Contact
- Dry Contact Output
- Max. Current 5A



The VT11 Dry Contact Output is a versatile relay output (relay switchable contact) designed for controlling various devices and systems. It offers both relay output and dry contact output capabilities, allowing it to function effectively in multiple applications.

Device type	Relay switchable contactor, Dry contact output
Input	wire terminal, pitch 3.81mm, 2P
Outputs	wire terminal, pitch 5.0mm, 2P
Operating temperature	From -50 °C to +105 °C
Operating humidity	5% - 95% (Non-Condensing)
Max switching current	5A
Max. switching voltage	250VAC / 30VDC

Max. switching power	1250VA / 150W
Min. contact load	No gold plated: 5VDC 10mA
Power consumption	12 mW
Max. distance m	200 m
Dimensions	60×18×18 mm
HS Code	9025 11 800
GTIN	8588009886525

VUTLAN
SOLUTIONS
www.vutlan.com



VT12 Relay Module

- Relay Switchable Contact
- Dry Contact Output
- Max. Current 5A



The VT12 Relay Module is a compact dual-channel power and switching unit designed for controlling any 12V DC devices up to 1A per output. With integrated relays and dry contact inputs, the module offers reliable switching and power delivery in a wide range of automation and control applications.



Device type	Power Supply, Relay device
Power terminals:	2 outputs (A and B)(Relay, Ground, 12V)
Max. output current:	1A
Relay Output:	5A
Power input terminal:	2P, pitch 3.5 mm, 12V DC
Dry contact inputs:	2 inputs (A and B), 4P, pitch 3.5 mm
Operating Temperature:	-40°C to 85°C
Storage temperature:	-10°C to 85°C
Operating humidity:	0 to 95% RH
Power Consumption:	200 mW
Mounting possibilities:	DIN rail
HS Code	9025 11 800
GTIN	8588009886723

Vutlan Web Interface

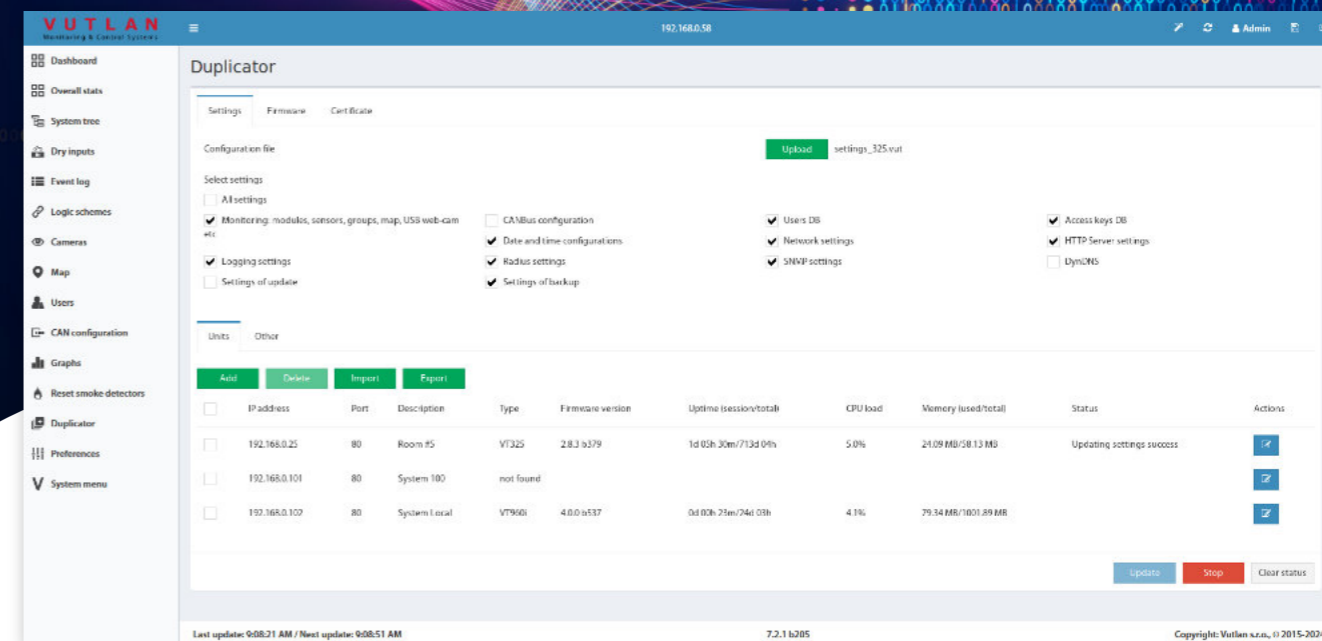


An **intuitive web interface** for managing sensor settings and system elements.

Key Features:

- **Dashboard Overview:** Monitor real-time data from connected sensors and devices.
- **Alerts and Notifications:** Set up notifications via email, SMS, and Telegram messenger.
- **Logical Schemes:** The interface allows users to create automation logic schemes to automate actions based on rules.
- **Historical Data & Logs:** Storing thousands of events over time.
- **Remote Management:** Control your infrastructure remotely.

Duplicator



The **Duplicator program** is a management tool specifically designed for handling the configuration and firmware updates of multiple Vutlan monitoring devices. It simplifies the process by enabling users to simultaneously upload configurations and firmware to many devices, which is particularly useful for administrators managing large-scale systems.

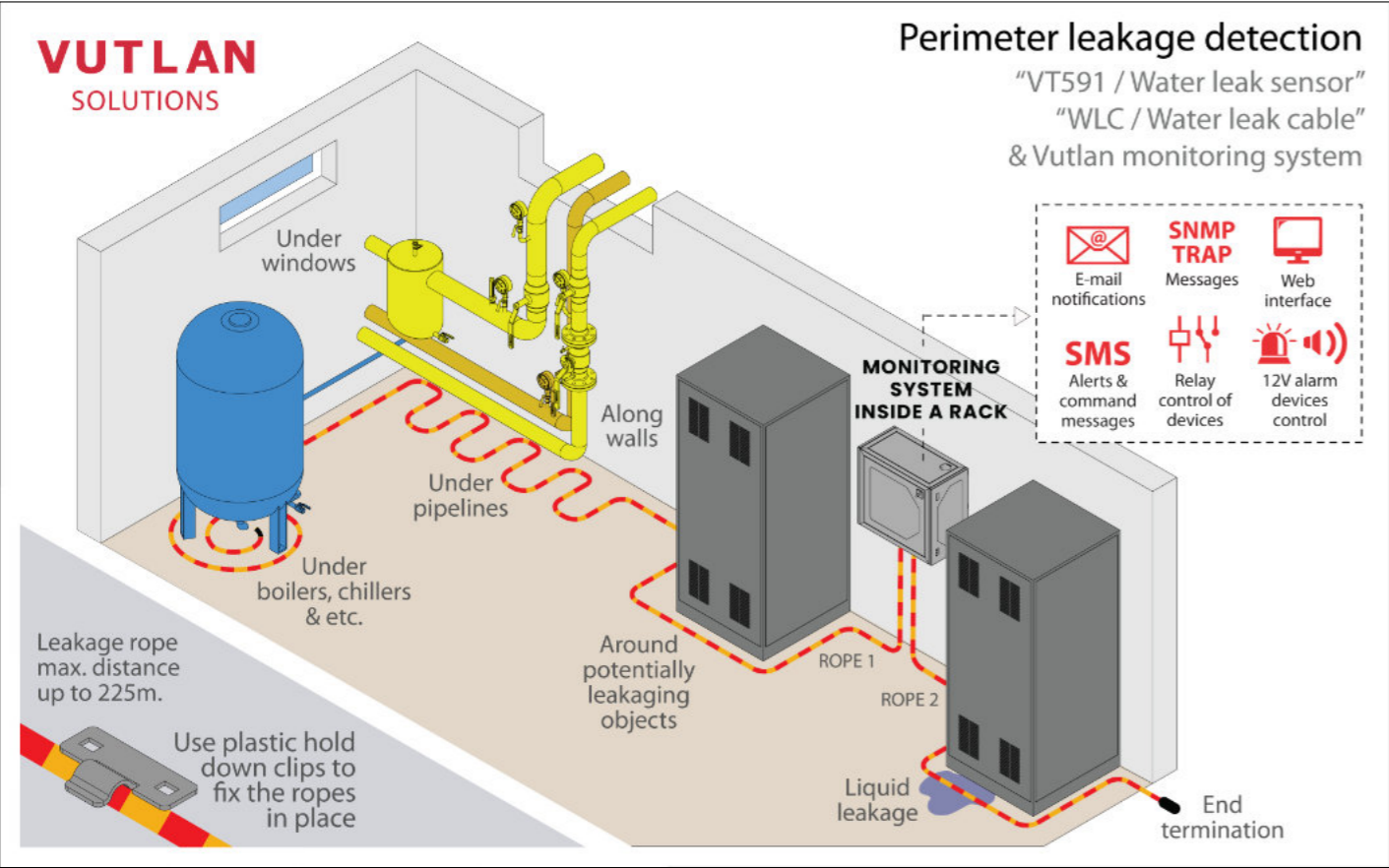
Key Features:

- **Centralized Management:** Allows for the centralized management of up to 50 Vutlan monitoring units (e.g., the VT855t series) through a single device with the Duplicator license.
- **Administrator Permissions:** To operate the program, the user must have administrator permissions, ensuring security and control over the process.
- **Single License Use:** The Duplicator license is tied to a single Vutlan monitoring unit, which then manages other units via their IP addresses.

VUTLAN
SOLUTIONS
www.vutlan.com

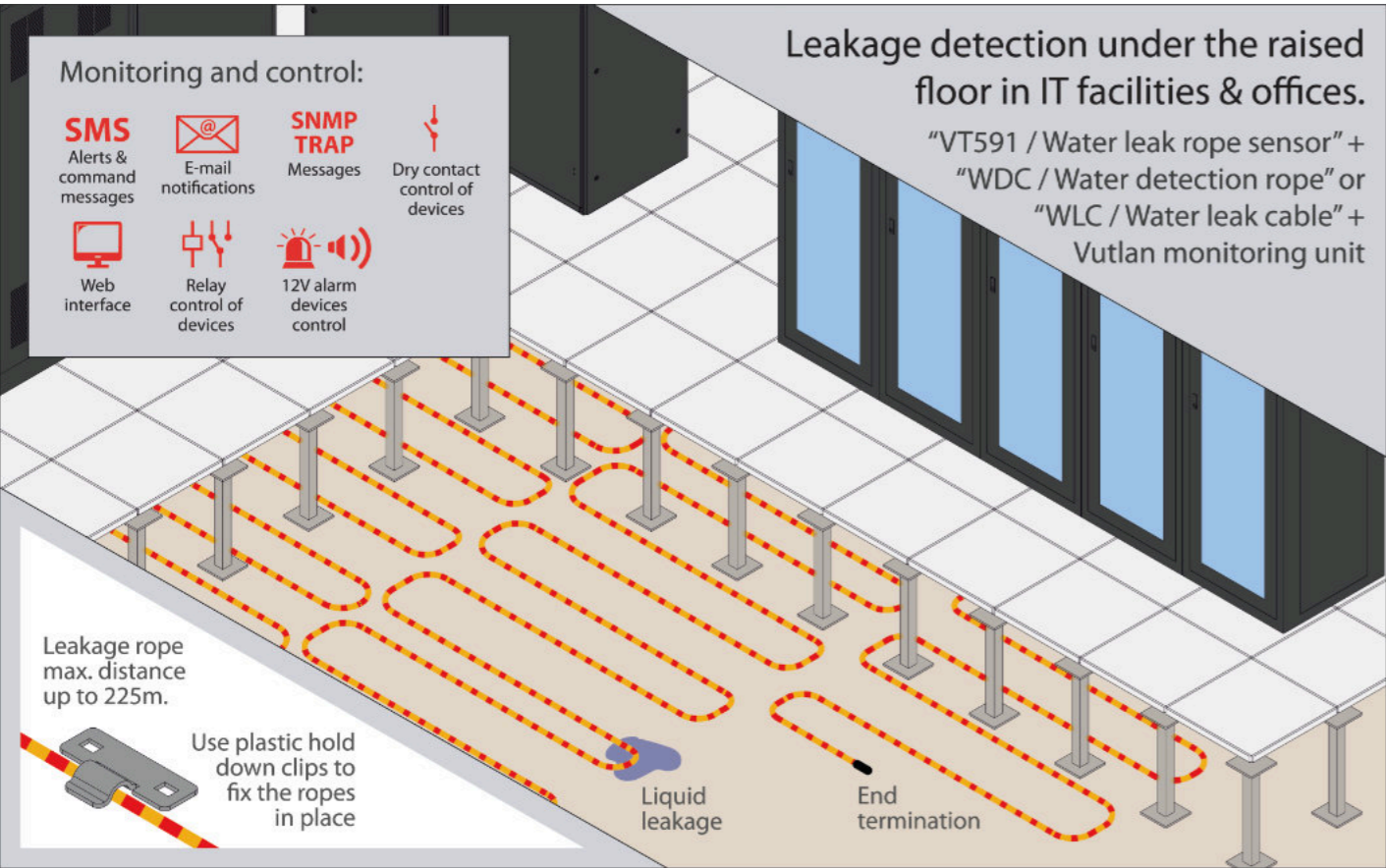


Leakage detection

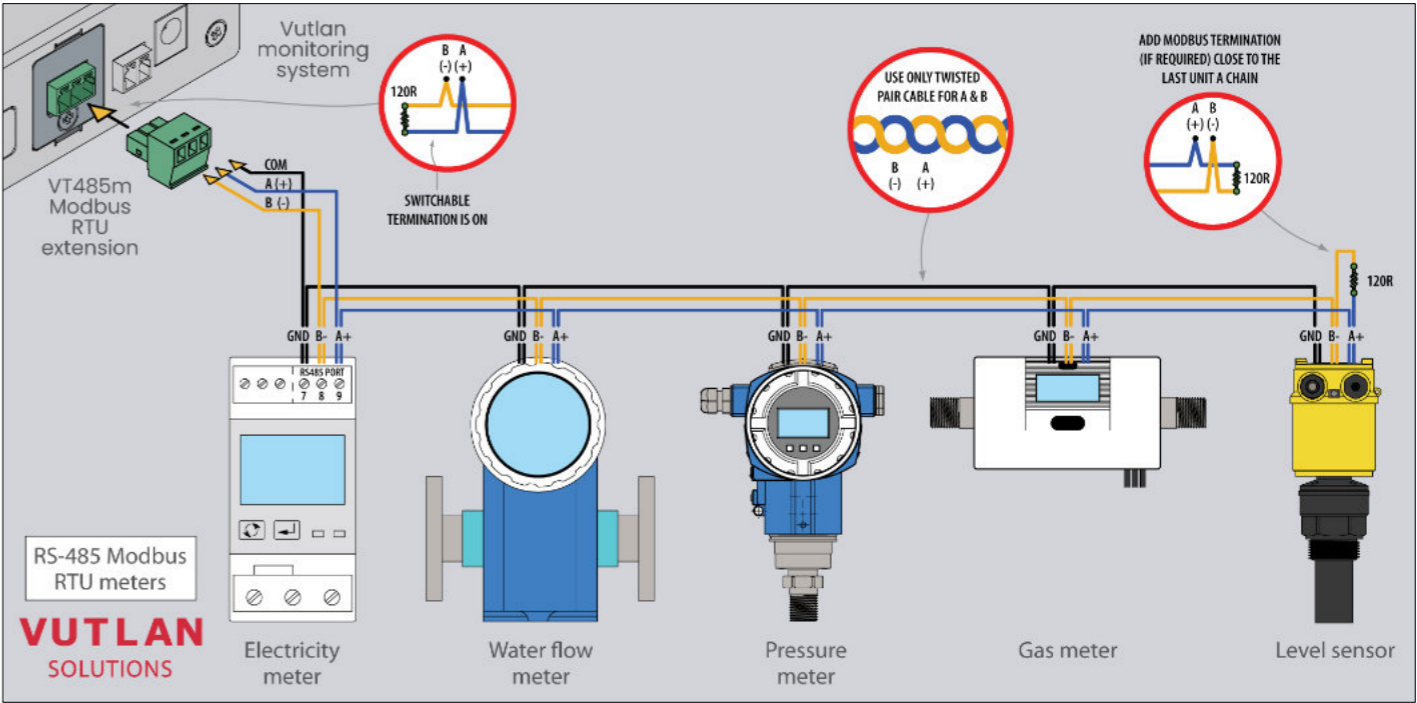


Detectable liquids:

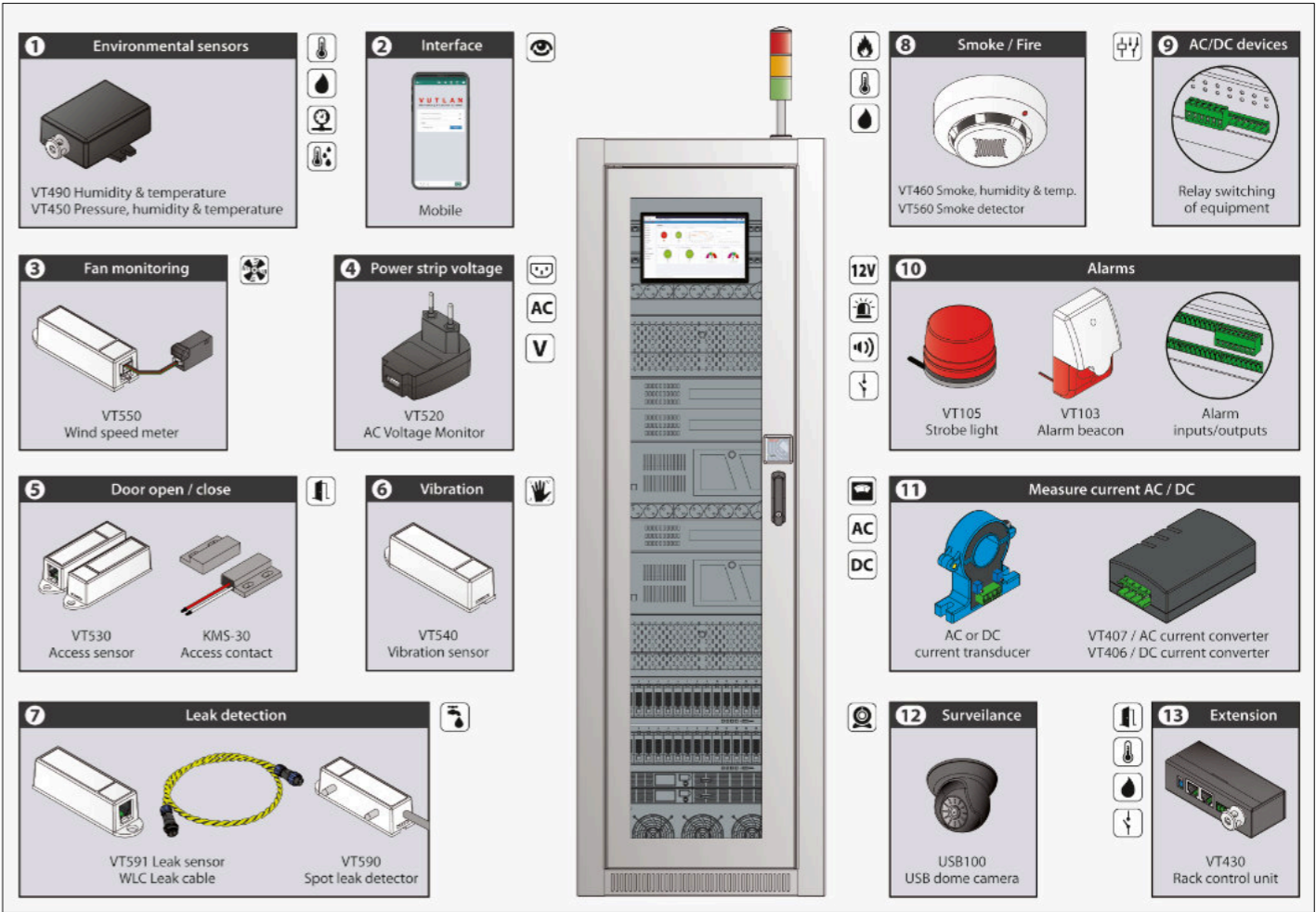
- clean, polluted, and distilled water;
- acids, alkali, alcohols;
- other electrically conductive liquids;



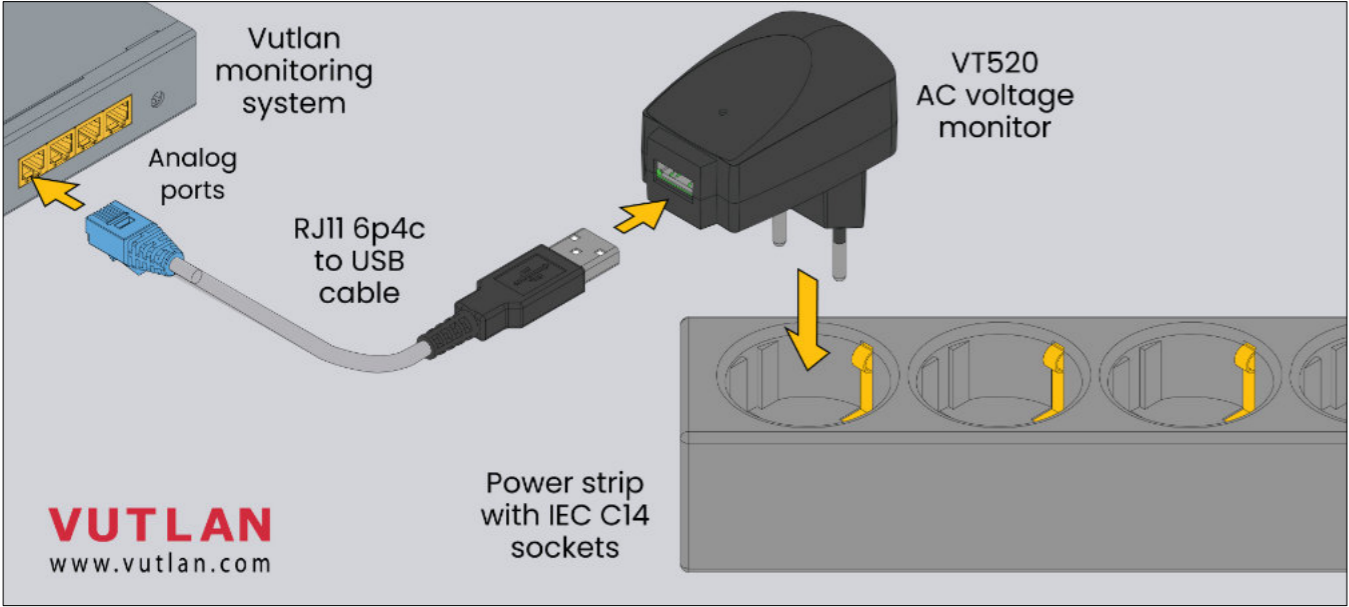
VT485m / Modbus RTU extension



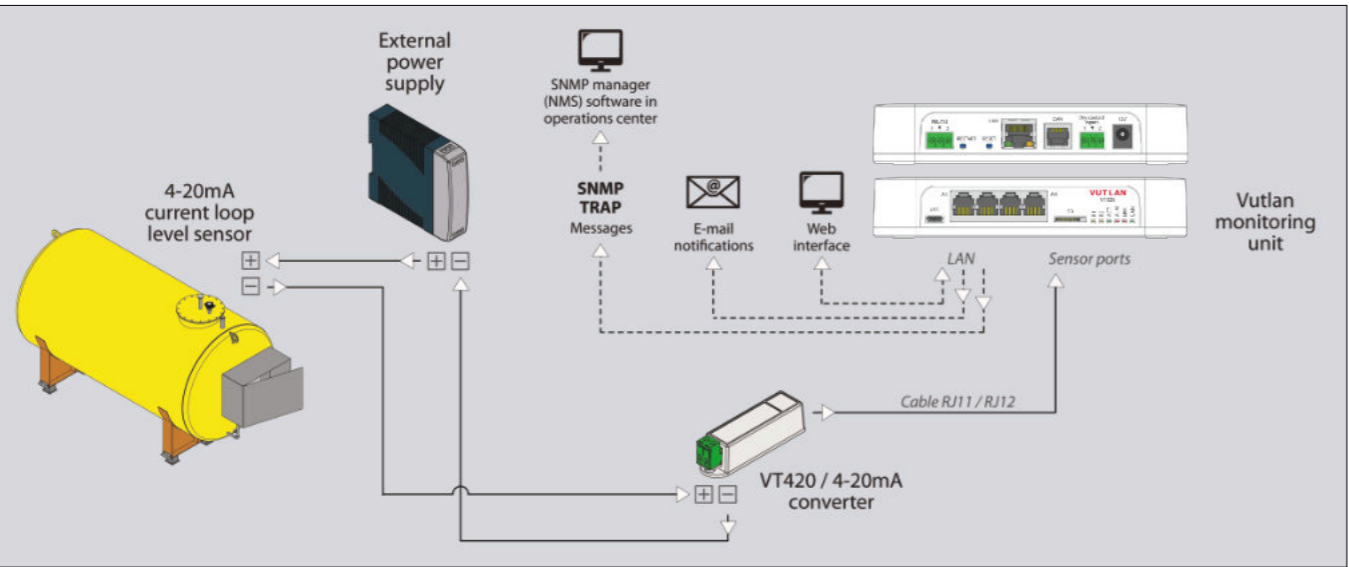
Server Rack & Data Center Monitoring



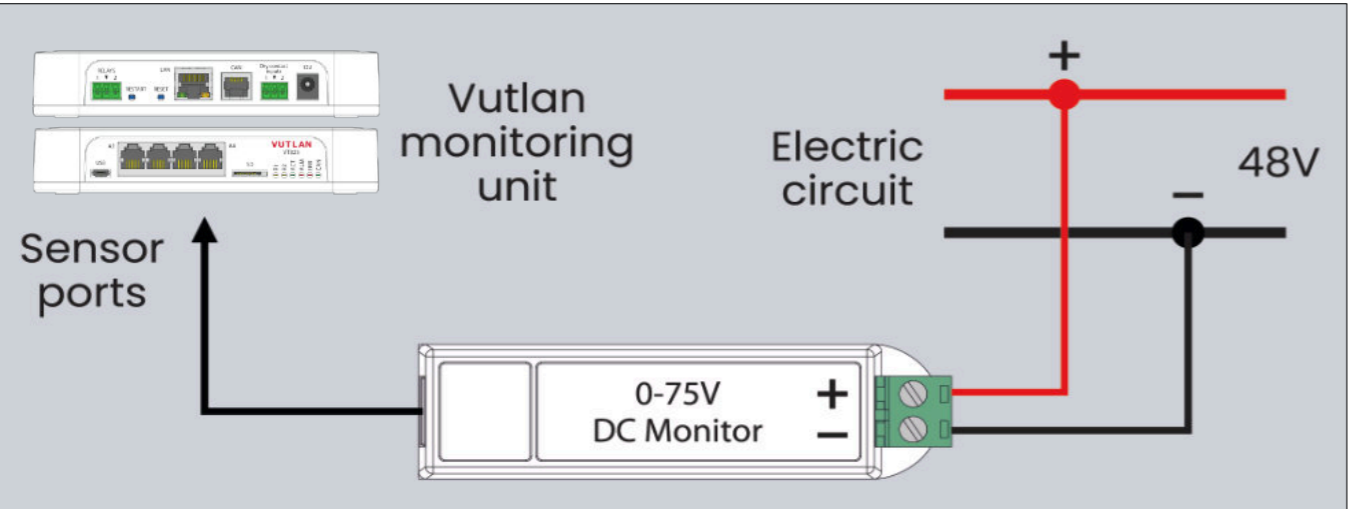
Measure AC voltage 0-246V



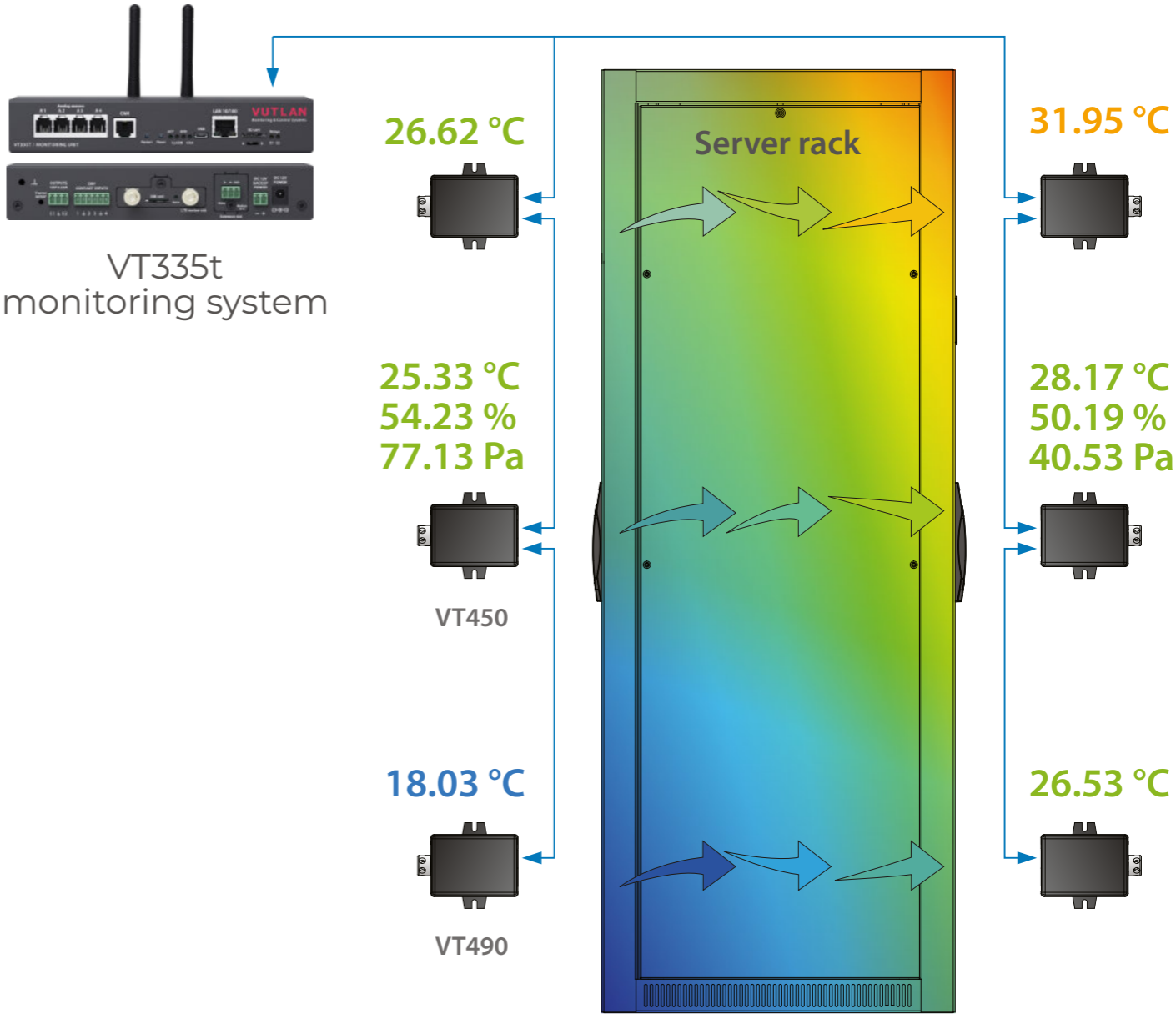
Connecting 4-20mA diesel level meters



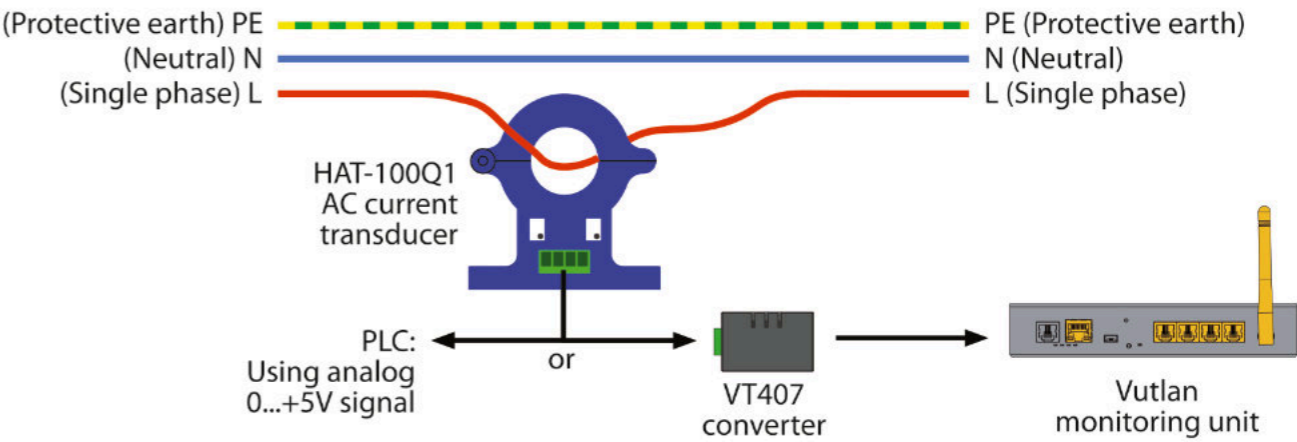
Battery monitoring using VT410 / DC voltage monitor



Thermal mapping data over SNMP



Measuring current in AC power circuit
VT407 / AC HAT converter
HAT-100Q1 / AC current transducer



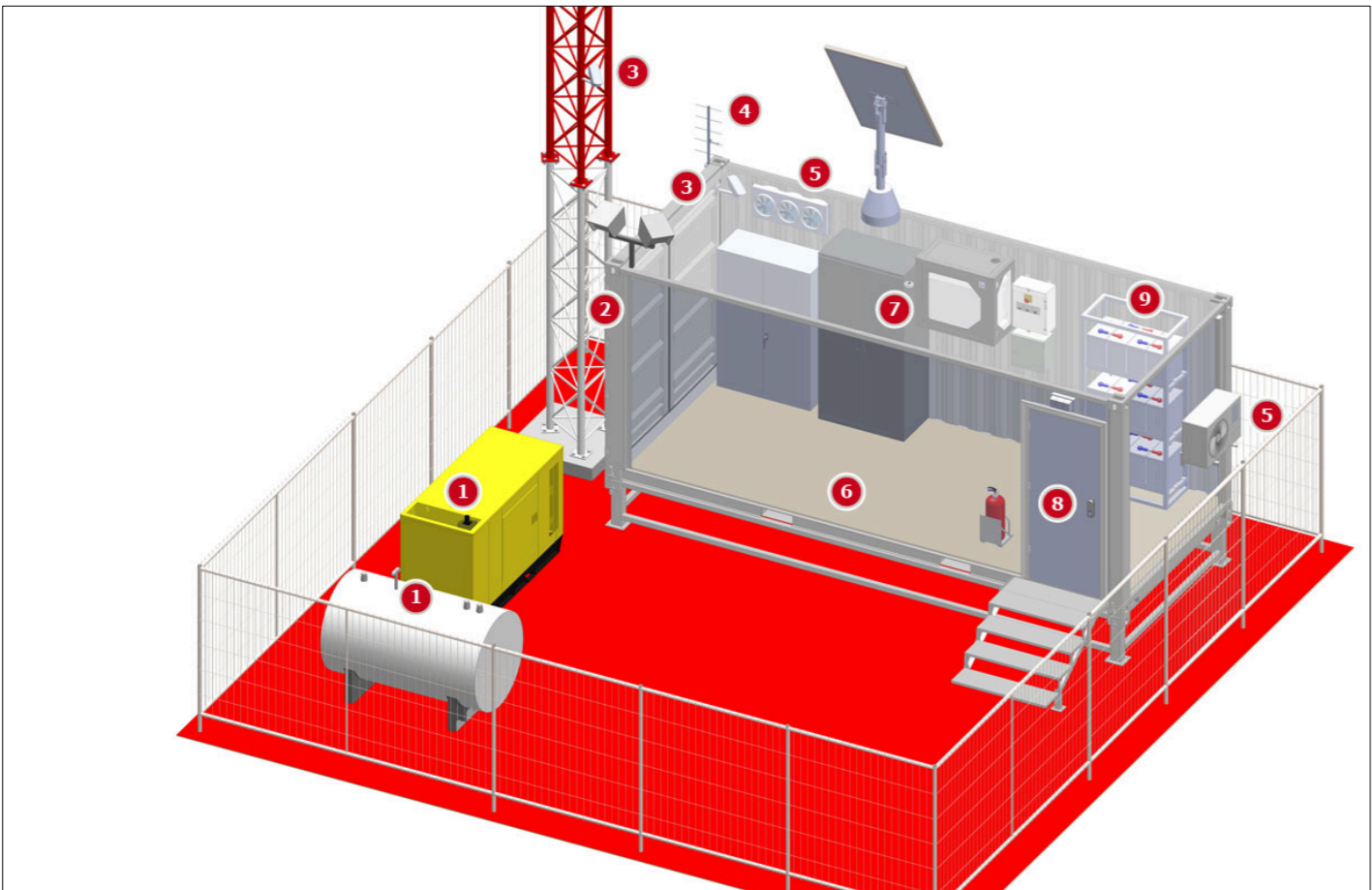


Monitor Telecom site

A wide variety of sensors with help to monitor remote Telecom sites and prevent unauthorized access, theft, and damage to the site, and monitor technical equipment, and energy consumption.

Notifications and alerts keep maintenance personnel constantly informed about the condition of their telecommunication infrastructure.

Codeless logic schemes help to provide an easy-to-use method for monitoring and controlling the equipment as well as to help set up a reliable alert and notification system.

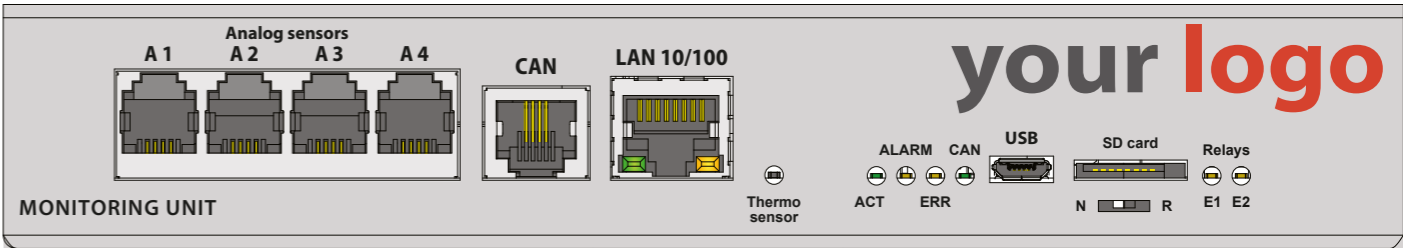


OEM: Your Brand Name on our products.

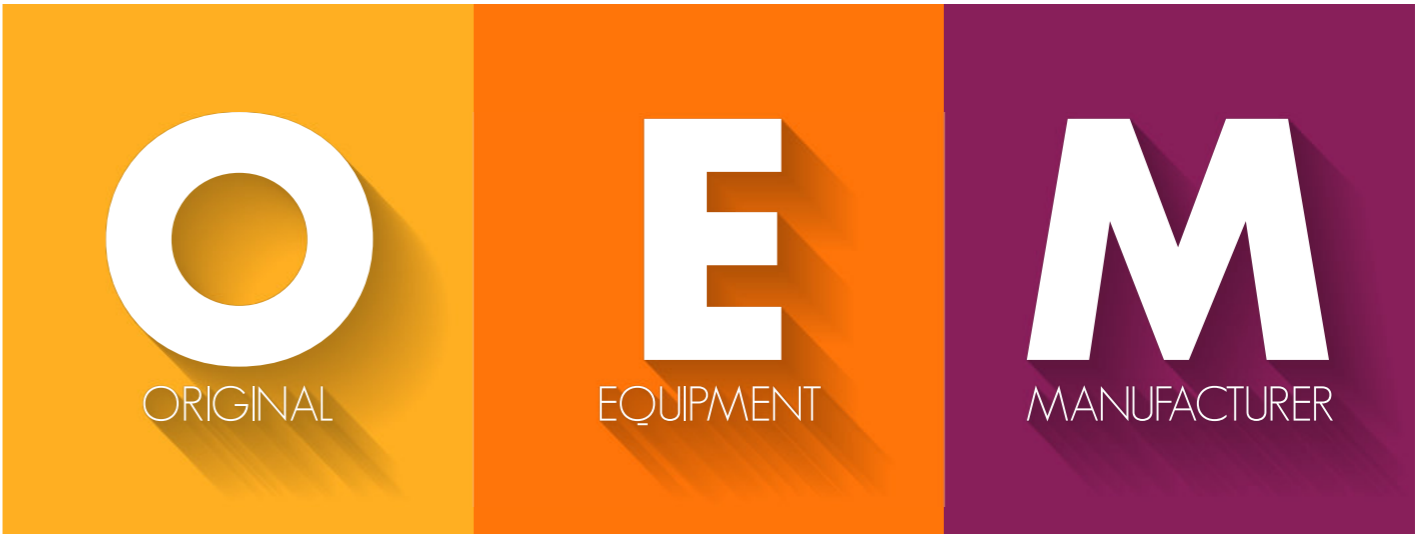
Vutlan provides OEM services to some of the major European companies from Germany, Switzerland, Poland, and Turkey.

We have the experience and capabilities needed to help customers reduce their time to market, scale up manufacturing capacity, and develop electronic equipment for their instrumentation.

Our OEM and end-customer projects range from applications in remote site management, power monitoring, data center cabinet access control, enterprise access control and time and attendance to highly custom multi-function industrial, oil and gas, and security solutions.



7 years of experience in manufacturing OEM products!



"Professional OEM Partner to **Design** **Customize** **Manufacture** electronic equipment"

Customize *your* Dashboard



- Data Measurement and Reporting
- Alerts and Notifications
- Easy Setup and Management
- Web-Based Management Interface
- Multi-language
- No code is required

Create logic schemes for automation, No code required

Edit logic scheme

Create copy

Scheme name

HIGH TEMPERATUR

Disable scheme

no

Action	Element	State	Timeout (hh:mm:ss)	Repeat/Duration	Operator
IF	Temperature rack 1 (A4)	high alarm	not used	not used	THEN
THEN	Power-1	on	none	once	AND
THEN	My mail	send video	none	once	AND
THEN	Dial task	dial number	none	once	AND
THEN	Power EDC SMS	send SMS	none	once	END

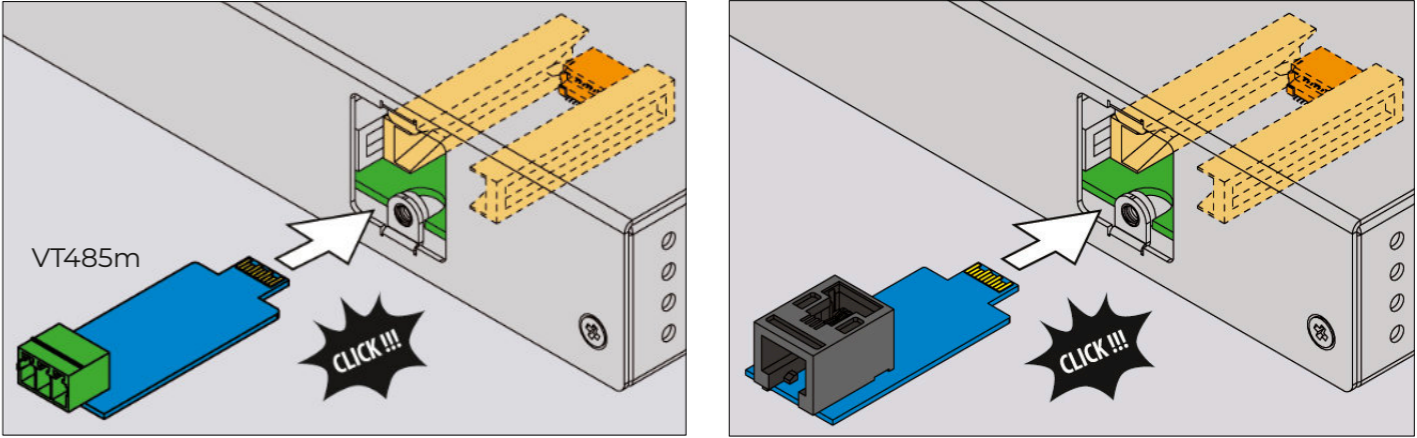
OK

Apply

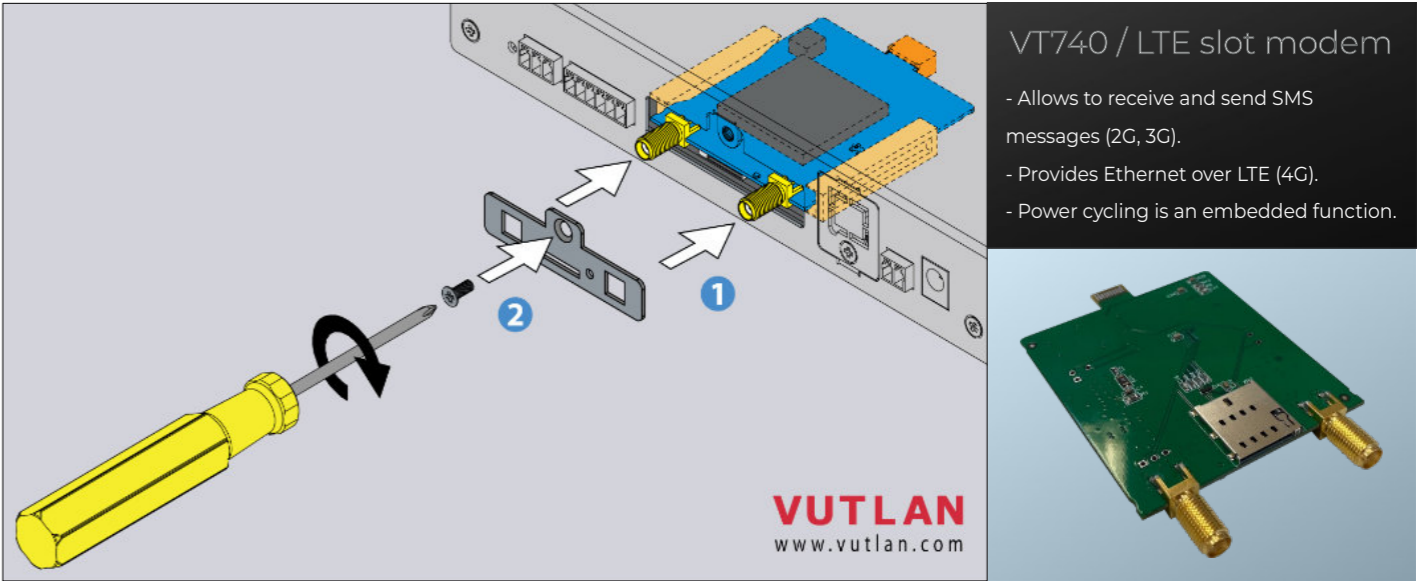
Delete

Cancel

VT485m / Modbus RTU extension or VT485r / OSDPv2 reader extension
Ordered separately



VT740 / LTE slot modem
Ordered separately



VT-BAT / Backup battery 6F22 9V or VT-ACCU / Backup reservation battery
Ordered separately

